

**oluce**

# Oluce Coupe 2202 Table Lamp

LA9390

SOURCE: <https://www.davidvillagelighting.co.uk/product/Oluce-Coupe-2202-Table-Lamp/9878>



## PRODUCT DESCRIPTION

**Designer:** Joe Colombo

### Oluce Coupe 2202 Table Lamp

Designed by the visionary Joe Colombo in 1967, the Oluce Coupé 2202 Table Lamp epitomises mid-century modern design and innovative functionality. Winner of the "International Design Award" in 1968, this lamp is part of the permanent collections at MoMA and the Neue Sammlung Museum. The Coupé 2202 features a semi-cylindrical reflector in lacquered aluminium, supported by a chrome-plated stem and lacquered metal base. Its adjustable head tilts and rotates, allowing for focused, direct lighting wherever needed.

Ideal for desks, side tables, or reading nooks, the Coupé 2202 Table Lamp is a versatile addition to both residential and commercial interiors. Its combination of sleek design, functionality, and timeless appeal ensures it will remain a design classic for years to come.

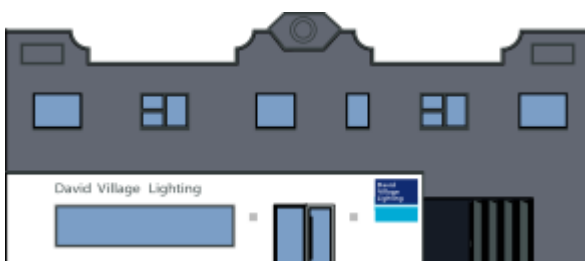
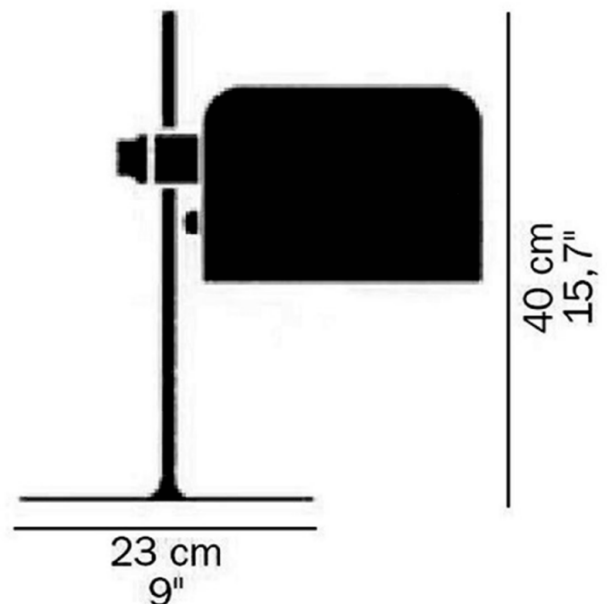
## PRODUCT SPECIFICATION

**Light Source:** 1 x Max 100W E27 (Excluded)

**IP Code:** 20

**Dimming:** In-line on/off switch included on cable.

**Dimensions:** Height: 40cm  
Base: Ø23cm



**For all sales and technical enquiries, please contact:**

+44 (0)114 263 4266

[info@davidvillagelighting.co.uk](mailto:info@davidvillagelighting.co.uk)

[www.davidvillagelighting.co.uk](http://www.davidvillagelighting.co.uk)