



Oluce Sonora Opal Pendant

LA9380

SOURCE: <https://www.davidvillagelighting.co.uk/product/Oluce-Sonora-Opal-Pendant/9856>



PRODUCT DESCRIPTION

Designer: Vico Magistretti

Oluce Sonora Opal Pendant

Oluce Sonora Opal Pendant was designed by Vico Magistretti in 1976. Magistretti's inspiration was purely geometric shapes, which he pursued throughout his life and incorporated into all his projects. This stunning light fixture features an opaque shade that diffuses light in a way that provides bright and clear illumination, resulting in a warm and inviting atmosphere that enhances any space with its gentle glow.

Sonora Opal Pendant is available in two different sizes: 438 and 411. The downward light can be featured above a dining table or kitchen island in a cluster for a sleek and minimalistic aesthetic. Sonora Opal Pendant is designed to add a touch of sophistication and luxury to any space, be it a home or a commercial establishment.

PRODUCT SPECIFICATION

Light Source: 438

1x Max 100W, E27 (Excluded)

411

2x Max 100W, E27 (Excluded)

IP Code:

20

Dimming:

Dimmable via mains phase dimming

Dimensions: 438

Height: 19cm

Diameter: Ø 38cm

Cable length: 240cm

411

Height: 25cm

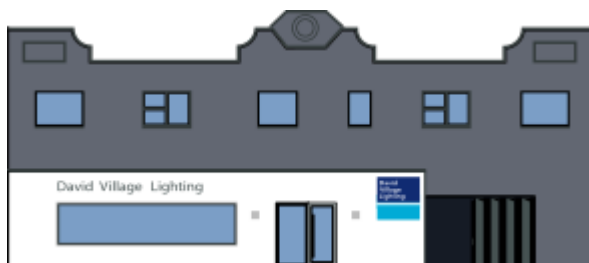
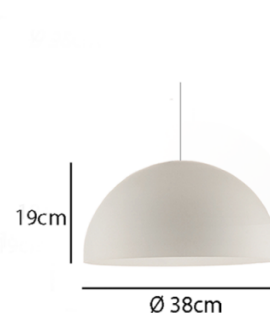
Diameter: Ø 50cm

Cable length: 240cm

Senora 411



Senora 438



For all sales and technical enquiries, please contact:

+44 (0)114 263 4266

info@davidvillagelighting.co.uk

www.davidvillagelighting.co.uk