



# Oluce Canopy LED Pendant

LA9378

SOURCE: <https://www.davidvillagelighting.co.uk/product/Oluce-Canopy-LED-Pendant/9854>



## PRODUCT DESCRIPTION

**Designer:** Francesco Rota

## Oluce Canopy LED Pendant

Oluce Canopy LED Pendant was created by Italian designer, Francesco Rota in 2010. The name and shape of this pendant comes from the ceiling rose, one of the simplest and often neglected elements of lighting technology, which is used to disguise any wires which are coming out of the ceiling. Rota takes up this shape again but this time he enlarges and makes it the focal point of the project, a large-sized metal lampshade, presented in sought-after colour combinations. Each diffused, soft light is concealed inside of the dome shade.

The Canopy LED Pendant by Oluce is available in two sizes: small and large. Add a minimalistic element to any décor with the Canopy Pendant which can also be situated in both a residential or commercial setting.

## PRODUCT SPECIFICATION

**Light Source:** 25W, 3000K, 4500 Lumens

**IP Code:** 20

**Dimming:** Dimmable via mains phase dimming

**Dimensions:** **Small**

Height: 21cm

Diameter: Ø 60cm

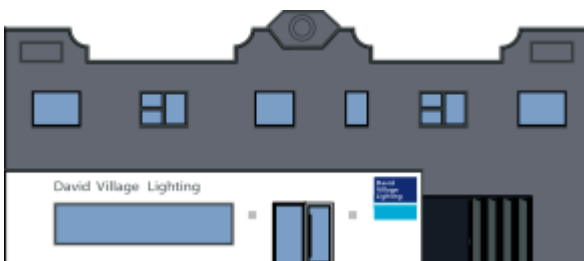
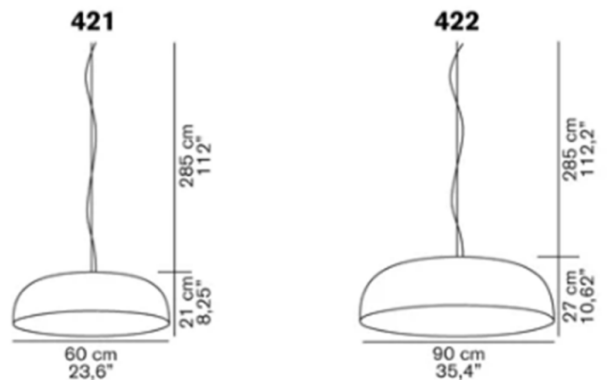
Cable length: 285cm

**Large**

Height: 27cm

Diameter: Ø 90cm

Cable length: 280cm



**For all sales and technical enquiries, please contact:**

+44 (0)114 263 4266

info@davidvillagelighting.co.uk

www.davidvillagelighting.co.uk