

FLOS

Flos Romeo Babe Soft Pendant

LA9324

SOURCE: <https://www.davidvillagelighting.co.uk/product/Flos-Romeo-Babe-Soft-Pendant/9740>



PRODUCT DESCRIPTION

Designer: Philippe Starck & Eugeni Quitllet

Romeo Babe Soft Pendant Light by Flos

A part of the [Romeo Babe collection](#), the Romeo Babe Soft pendant light is a simple and petite suspension providing a soft diffused light emission. Designed by renowned Italian designer Philippe Starck for Flos, the pendant has a cream silk pleated fabric shade and a matt silver ceiling rose giving the light a timeless feel.

The Romeo Babe Soft pendant can be use individually to light specific areas or in multiples to create an elegant lighting feature. The simple, petite silk pleated shade suits a wide variety of interiors and is suitable for use in bedrooms, living rooms and studies.

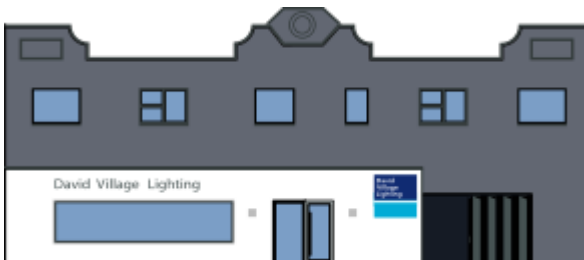
PRODUCT SPECIFICATION

Light Source: 1 x max 40W G9 (excluded)

IP Code: 20

Dimming: Dimmable via mains phase dimming

Dimensions: Ø11cm
9cm height
280cm cable length



For all sales and technical enquiries, please contact:

+44 (0)114 263 4266

info@davidvillagelighting.co.uk

www.davidvillagelighting.co.uk