



LA9103

Luceplan GlassGlass 40 Pendant

SOURCE: <https://www.davidvillagelighting.co.uk/product/luceplan-glassglass-40-pendant/9304>



PRODUCT DESCRIPTION

Designer: Paolo Rizzatto

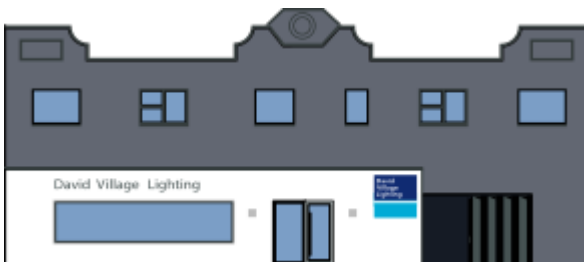
With GlassGlass, thanks to its versatility, lighting scenarios and different atmospheres can be created to match everyday situations. The blown glass diffuser bodies are "originals" because, although made within a modern cycle of serial production, the ancient blowing process craft is maintained, as it was in Syria and later in the Roman Empire in 100 BC. The light can be clamped both to the ceiling and to the wall.

The attachment rosette comprises a rigid arm and, in the case of wall installations, it allows the diffuser to be distanced from the wall. The electric cable is a bearing element because it runs along a steel mesh sheath. This can bear heavy weights, the ends of which are fixed to the rosette and to the terminal diffuser ring support. The system of the ring with handle, fixed to the mouth of the glass, and easily hooked onto the bearing frame, offers handiness, safety, simple assembly and maintenance previously unthinkable for glass diffusers on that scale.

Spherical shaped, blown glass diffuser body. Diecast metal bearing frame. Aluminium, Chrome.

PRODUCT SPECIFICATION

Light Source: max 205W E27 (excluded)



For all sales and technical enquiries, please contact:

+44 (0)114 263 4266

info@davidvillagelighting.co.uk

www.davidvillagelighting.co.uk