

Artemide

Artemide Logico Ceiling Light

LA8228

SOURCE: <https://www.davidvillagelighting.co.uk/product/Artemide-Logico-Ceiling-Light/918>

PRODUCT DESCRIPTION

Designer: Michele De Lucchi & Gerhard Reichert

Logico Ceiling by Artemide

The Logico ceiling light, a design by Michelle De Lucchi and Gerhard Reichert earned them the Red Dot Design Award for both the single suspension and the table lamp. Logico's unique glass diffuser is made of blown glass in three layers; the first crystal, silk and the last crystal layer. This method attributes the diffuser to a silk finish, almost fabric-like, emitting a direct soft light.

The biomorphic shape of the Logico lights, resembling a flower cup, allows you to combine the lights and create your own configurations. Logico Ceiling is available in three sizes (single, mini and micro) and is available in the same two finish options; milky white or grey. The family also includes suspensions, wall lights and table lamps.



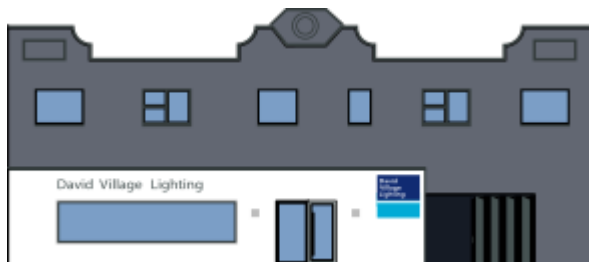
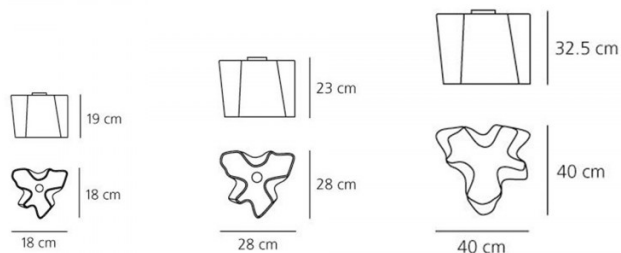
PRODUCT SPECIFICATION

Light Source: **Single** - 1 x 15W E27 LED DIM (excluded)
Mini - 1 x 10W E27 LED DIM (excluded)
Micro - 1 x 6W E14 LED DIM (excluded)

IP Code: 20

Dimming: Dimmable via mains phase dimming.

Dimensions: **Single** - 40 x 40 x 32.5 cm
Mini - 28 x 28 x 23 cm
Micro - 18 x 18 x 19 cm



For all sales and technical enquiries, please contact:

+44 (0)114 263 4266

info@davidvillagelighting.co.uk

www.davidvillagelighting.co.uk