

kdln

KDLN Atomium Pendant

LA8956

SOURCE: <https://www.davidvillagelighting.co.uk/product/KDLN-Atomium-Pendant/9107>



PRODUCT DESCRIPTION

Designer: Hopf & Wortmann

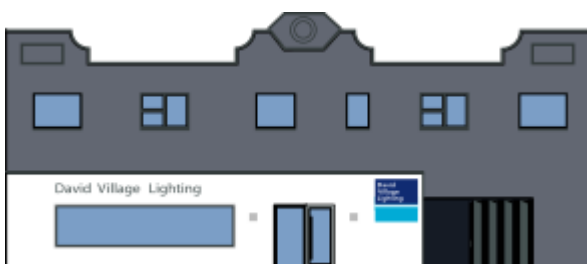
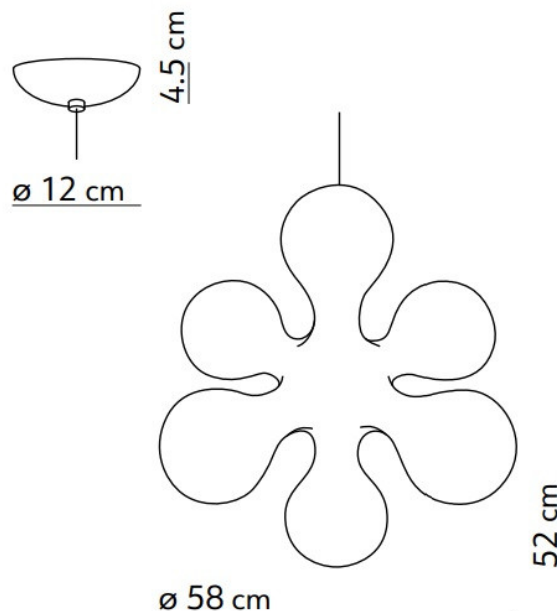
KDLN Atomium Pendant

Designed by design duo Hopf and Wortmann in their studio in Munich, the Atomium collection is a display of modern designs and techniques. The design was based on the form of an atom and is described as a design that is 'exploring the structure of matter and translating the atom into an astonishing luminous body'. The 6 lit modules, which each hold their own light sources, are formed through a process of rotation molding. This is how each rounded section is formed out of the polyethylene diffuser.

This diffuser creates a bright yet soft light that fills a space with ease, when switched off this lamp also adds an artistic touch to your space. Emitting a bright and generous light, the Atomium pendant would be an exciting fixture in any space. Pair this KDLN pendant light with the rest of the [Atomium collection](#) which includes a ceiling/wall lamp and a floor light.

PRODUCT SPECIFICATION

- Light Source:** 6 x Max 40W E14 (excluded)
- IP Code:** 20
- Dimming:** Dimmable via mains phase dimming.
- Dimensions:** Ø58cm
Height: 52cm
Ceiling Canopy: Ø12cm
Cable Length: 180cm



For all sales and technical enquiries, please contact:

+44 (0)114 263 4266

info@davidvillagelighting.co.uk

www.davidvillagelighting.co.uk