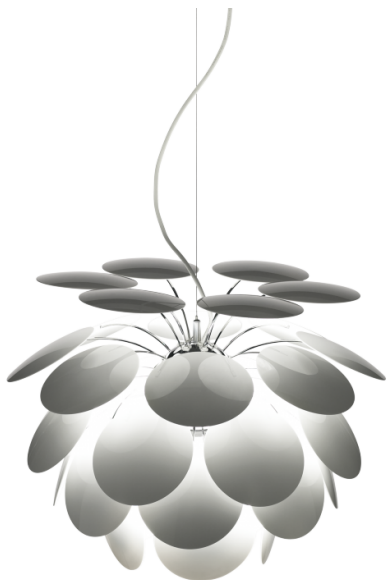


marset

Marset Discoco Pendant Light

LA8818

SOURCE: <https://www.davidvillagelighting.co.uk/product/Marset-Discoco-Pendant-Light/8928>



PRODUCT DESCRIPTION

Designer: Christophe Mathieu

Marset Discoco Pendant Lights

The designer's early sketches for the Discoco date to 1997 - Christophe Mathieu created a light source surrounded by reflecting opaque discs (coated white or gold lacquer) of moulded ABS suspended by injection moulded aluminium rods - as a result, the finish is flawless and the assembly is screw-free. This cleverly designed feature pendant conceals the bulbs to create an enjoyable glare-free effect, the coloured discs also create a beautiful lighting effect on nearby ceilings and walls.

Marset's Discoco Suspension lights are a highly decorative feature light, attractive and exuberant, it creates a subtle light ideal for large spaces in commercial spaces as well as domestic applications. The variety of size and colour choices makes the Discoco a versatile piece to suit your interior design.

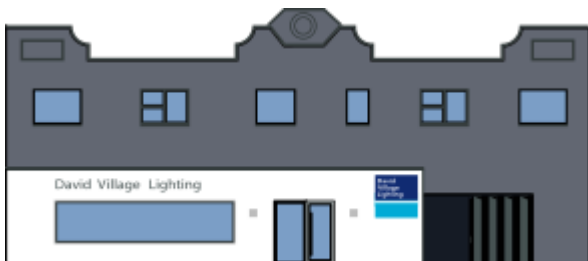
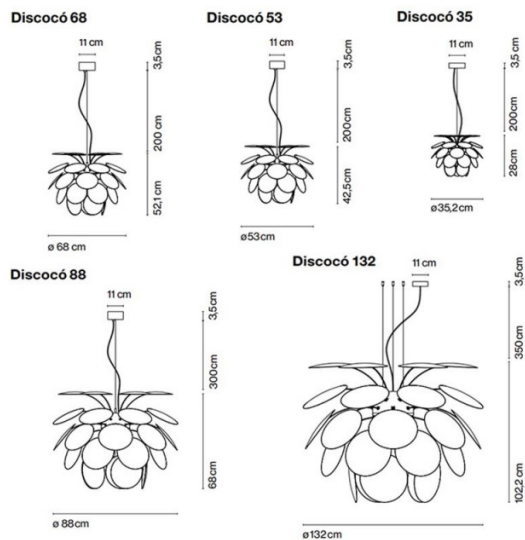
PRODUCT SPECIFICATION

Light Source: Size 35: 1 x E14 LED 5W (excluded)
 Size 53: 1 x E27 LED 14W (excluded)
 Size 68 & 88: 3x E27 LED 14W (excluded)
 Size 132: 6x E27 LED 14W (excluded)

IP Code: 20

Dimming: Dimmable via mains phase dimming.

Dimensions: Size 35: Ø35cm x 28cm height
 Size 53: Ø53cm x 43.5cm height
 Size 68: Ø68cm x 52cm height
 Size 88: Ø88cm x 68cm height
 Size 132: Ø132cm x 102cm height



For all sales and technical enquiries, please contact:

+44 (0)114 263 4266

info@davidvillagelighting.co.uk

www.davidvillagelighting.co.uk