

FLOS

Flos Romeo Moon Pendant

LA8190

SOURCE: <https://www.davidvillagelighting.co.uk/product/Flos-Romeo-Moon-Pendant/789>



PRODUCT DESCRIPTION

Designer: Philippe Starck & Eugeni Quitllet

Romeo Moon Pendant Light by Flos

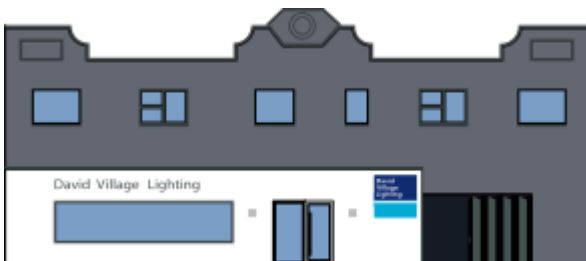
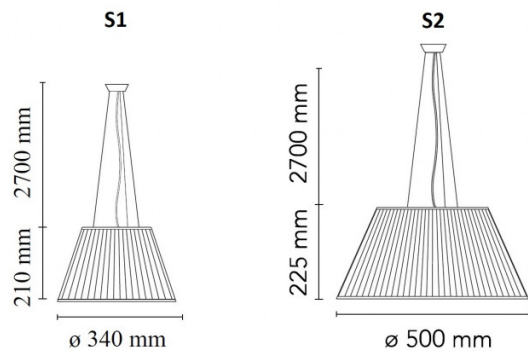
The Romeo Moon pendant light, by renowned designer Philippe Starck, is available in two sizes; S1 and S2. Suspended on steel cables, the contemporary design of the Romeo Moon pendant is indicative of Starck's design belief that objects should perform well before being considered beautiful.

Offering diffused light through its finely fluted pressed borosilicate glass lampshade, the Romeo Moon pendant lamp is paired with an etched glass diffuser for a sparkling display of light. Modern yet classic in its aesthetic, this pendant suits a variety of applications including in living areas, bedrooms or dining areas.

Offering classic silhouette's re-imagined, Starck's [Romeo Moon collection](#) also includes a table and floor lamp and options of a silk shaded version in the [Romeo Soft collection](#).

PRODUCT SPECIFICATION

- Light Source:** 1 x max 11.5W LED E27 (excluded)
- IP Code:** 20
- Dimming:** Dimmable via mains phase dimming
- Dimensions:** S1 - Ø34cm, H 21cm
S2 - Ø50cm, H 22.5cm
270cm cable length



For all sales and technical enquiries, please contact:

+44 (0)114 263 4266

info@davidvillagelighting.co.uk

www.davidvillagelighting.co.uk