

Artemide Nur Pendant Light

LA8780

SOURCE: <https://www.davidvillagelighting.co.uk/product/Artemide-Nur-Pendant-Light/6386>



PRODUCT DESCRIPTION

Designer: Ernesto Gismondi

Nur Pendant by Artemide

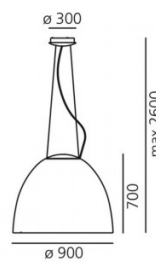
Nur was designed by Ernesto Gismondi, the father of Artemide who revolutionised lighting design in the world. The Nur lights are at a crossroad where traditional design meets modern lighting. The robust dome-shaped shade has become instantly recognisable and adds a touch of personality to any space. You can choose Nur lights to install in any environments as it fills beautifully any modern interior, both residential or commercial with a soft, diffused light.

The retrofit Nur pendant lights are available in three sizes, the large Nur 1618, medium Nur and the smallest, Nur Mini. The pendants are available in four colour options, either a matt aluminium or anthracite grey or if you prefer a glossy finish, the Nur and Nur Mini are also available in a gloss white or gloss black colour. The [Nur Collection](#) also includes a Nur Mini ceiling light and each application is available in an integrated LED version.

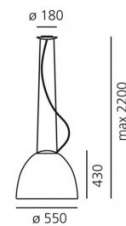
PRODUCT SPECIFICATION

- Light Source:** Nur 1618 - 2 x max 11W R7s (excluded)
 Nur - 1 x max 21W E27 (excluded)
 Nur Mini - 1 x max 11W R7s (excluded)
- IP Code:** 20
- Dimming:** Dimmable via mains phase dimming.
- Dimensions:** Nur 1618 - Ø90cm, 70cm H, 260cm cable
 Nur - Ø55cm, 43cm H, 220cm cable
 Mini Nur - Ø36cm, 28.5cm H, 200cm cable

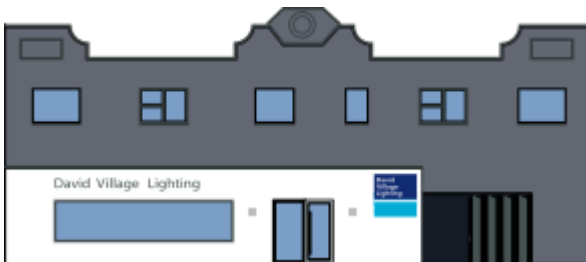
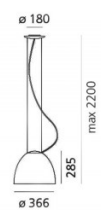
Nur 1618



Nur



Mini Nur



For all sales and technical enquiries, please contact:

+44 (0)114 263 4266

info@davidvillagelighting.co.uk

www.davidvillagelighting.co.uk