



Artemide Logico Wall Light

LA8722

SOURCE: <https://www.davidvillagelighting.co.uk/product/Artemide-Logico-Wall-Light/6029>



PRODUCT DESCRIPTION

Designer: Michele De Lucchi & Gerhard Reichert

Logico Parete by Artemide

With a unique process, the blown glass diffuser for the Logico lights is created by using three layers; first crystal, then silk and a final crystal layer. This method accredits the lights with a fabric, silk-like effect; as if its floating or moving. Designed by Michelle De Lucchi and Gerhard Reichert, the duo combined their design ingenuity with Artemide's know how to create this staggering light collection. Their concept originated from wanting to create a light, with the main focus being on a beautiful light diffusion.

The Logico Wall Light is available in three sizes (standard, mini and micro) and each is available in the classic milky white, smoked or tobacco colour option. The family also includes suspensions, ceiling lights and a table lamp. Its modular design allows you to combine more Logico lights, creating your own beautiful compositions.

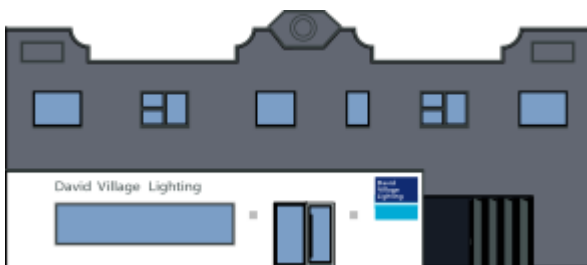
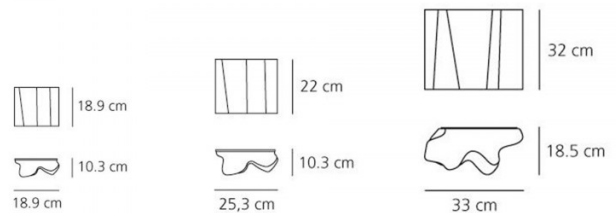
PRODUCT SPECIFICATION

Light Source: **Logico** - 2 x 8W E27 LED DIM (excluded)
Logico Mini - 1 x 8W E27 LED DIM (excluded)
Logico Micro - 1 x 6W E14 LED DIM (excluded)

IP Code: 20

Dimming: Dimmable via mains phase dimming.

Dimensions: **Logico** - 33 x 18.5 x 32 cm
Logico Mini - 25.3 x 10.3 x 22 cm
Logico Micro - 18.9 x 10.3 x 18.9 cm



For all sales and technical enquiries, please contact:

+44 (0)114 263 4266

info@davidvillagelighting.co.uk

www.davidvillagelighting.co.uk