

# Artemide Castore Table Lamp

LA8711

SOURCE: <https://www.davidvillagelighting.co.uk/product/Artemide-Castore-Table-Lamp/6008>



## PRODUCT DESCRIPTION

**Designer:** Michele De Lucchi & Huub Ubbens

### Castore Table Lamp by Artemide

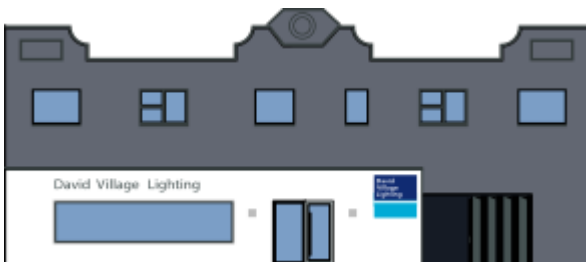
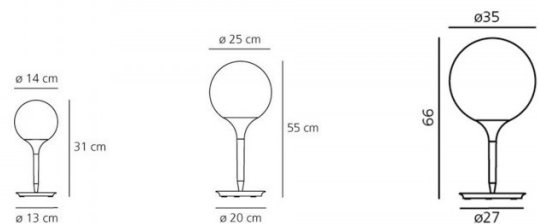
Castore lights have become an iconic product by the Italian brand Artemide. The lights were designed by Michelle de Lucchi, who also created the Tolomeo collection, and Huub Ubbens. The design of the Castore lights met great success, winning numerous awards like the Red Dot Design Awards, Design Plus, light+building and Compasso d'Oro/A.D.I Segnalazione in 2004.

A minimal and simplistic design, with a single, blown glass globe diffuser that balances on a slim stem and base. The Castore table lamp, emits a soft and diffused light into the room. While Castore 25 and Castore 35 have an integrated touch dimmer on the base, the smaller Castore 14 does not. The perfect lights for both hospitality and residential use, complimenting any interior.

The Castore range also includes a [pendant light](#) available in 4 sizes, and a [floor lamp](#).

## PRODUCT SPECIFICATION

- Light Source:** **Castore 14** - 1 x max 4W E14 LED (excluded)  
**Castore 25** - 1 x max 15W E27 LED (excluded)  
**Castore 35** - 1 x max 21W E27 LED (excluded)
- IP Code:** 20
- Dimming:** Castore 14 - Non dimmable.  
 Castore 25 & 35 - Integrated dimmer included on product.
- Dimensions:** **Castore 14** - Ø 14 cm, Ø 13 cm base, 31 cm H  
**Castore 25** - Ø 25 cm, Ø 20 cm base, 55 cm H  
**Castore 35** - Ø 35 cm, Ø 27 cm base, 66 cm H



**For all sales and technical enquiries, please contact:**

+44 (0)114 263 4266

[info@davidvillagelighting.co.uk](mailto:info@davidvillagelighting.co.uk)

[www.davidvillagelighting.co.uk](http://www.davidvillagelighting.co.uk)