

louis poulsen

# Louis Poulsen Toldbod 155 Wall Light

LA8598

SOURCE: <https://www.davidvillagelighting.co.uk/product/Louis-Poulsen-Toldbod-155-Wall-Light/5880>

## PRODUCT DESCRIPTION

### Toldbod Wall Light by Louis Poulsen

Completely glare-free, the Toldbod 155 wall light emits a direct downlight, suitable for many needs. Available in a powder coated body in black or aluminium, the shade is traditionally white on the inside to make sure the light emits a soft and comfortable light. Originally launched in 2006, the design of the Toldbod wall lamp was based on the PH Ellipse reflector, one of Poul Henningsen's last designs. The design is subtle and stylish, being a functional light that will seamlessly slip into any design scheme.

The Toldbod 155 wall lamp has an IP rating of 44, allowing you to install it anywhere around the house, the garden or back porch. Truly versatile you could use as handy reading light in your bedroom, or as a welcome home light by your front door. Suitable for both homes and professional settings, this wall light is classic and elegant.



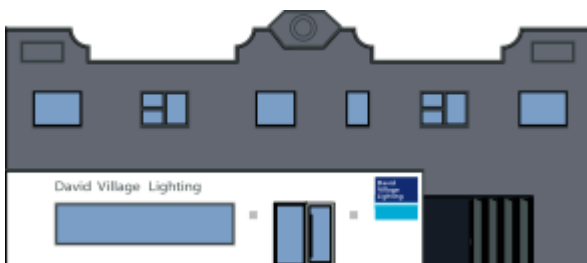
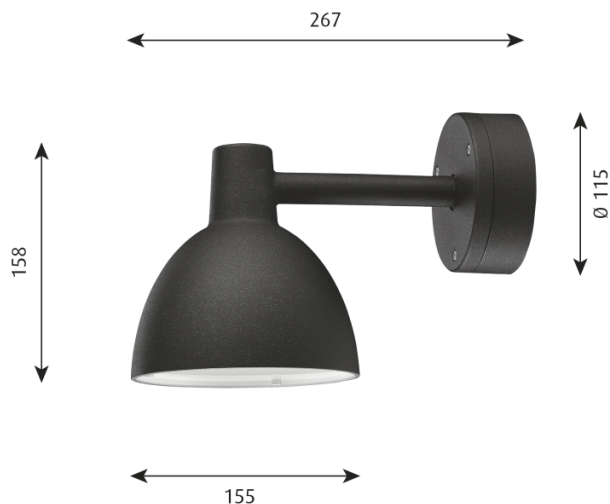
## PRODUCT SPECIFICATION

**Light Source:** 1 x Max 5.7W E14 LED (excluded)

**IP Code:** 44

**Dimming:** Dimmable via mains phase dimming.

**Dimensions:** Shade: Ø15.5cm  
Depth: 26.7cm  
Shade Height: 15.8cm  
Wall Base: Ø11.5cm



For all sales and technical enquiries, please contact:

+44 (0)114 263 4266

info@davidvillagelighting.co.uk

www.davidvillagelighting.co.uk