

**louis poulsen**

# Louis Poulsen PH 3-2½ Outdoor Wall Light

LA8592

SOURCE: <https://www.davidvillagelighting.co.uk/product/Louis-Poulsen-PH-3-2-Outdoor-Wall-Light/5871>

## PRODUCT DESCRIPTION

**Designer:** Poul Henningsen

### PH 3-2½ Wall Light by Louis Poulsen

The PH 3-2½ wall light is a model from the PH collection of lights from Louis Poulsen, a range that is based on a 3 shade system designed by Poul Henningsen in the 1920s. The wall light has this iconic lampshade in a black finish, which mainly directs the light downwards. The shade also creates harmonious and glare-free lighting, as it is based on a logarithmic spiral, with the centre of the light source placed in the spiral's focal point.

The PH 3-2½ wall lamp has an IP rating of 44 making it suitable for outdoor and indoor use. The wall lamp can be useful as a welcome light by the front door, or in a courtyard to brighten up the space as the evening sky draws in. Suitable for many different functions, the classic design and subtle black finish, means it can slip into any design scheme whether outside or inside.



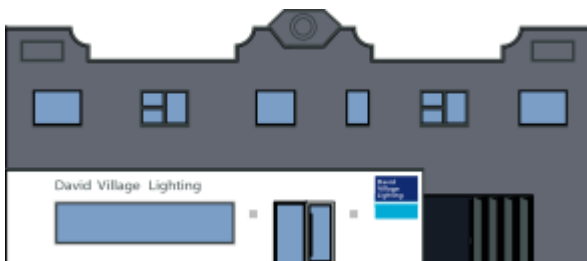
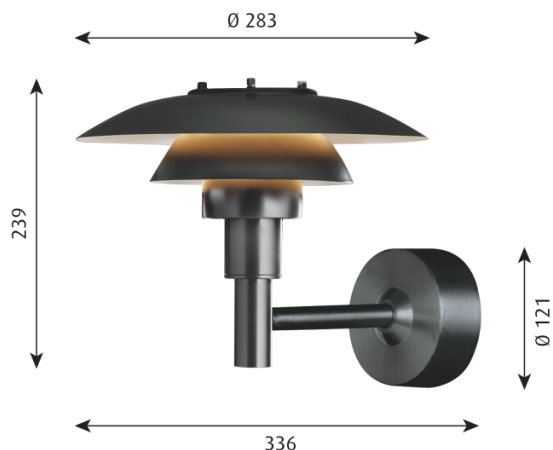
## PRODUCT SPECIFICATION

**Light Source:** 1 x Max 8.5W E27 LED (excluded)

**IP Code:** 44

**Dimming:** Dimmable via mains phase dimming.

**Dimensions:** Shade: Ø28.3cm  
 Height: 23.9cm  
 Depth: 33.6cm  
 Wall Base: Ø12.1cm



**For all sales and technical enquiries, please contact:**

+44 (0)114 263 4266

info@davidvillagelighting.co.uk

www.davidvillagelighting.co.uk