

louis poulsen

Louis Poulsen PH 2/1 Wall Light

LA8590

SOURCE: <https://www.davidvillagelighting.co.uk/product/Louis-Poulsen-PH-21-Wall-Light/5869>

PRODUCT DESCRIPTION

Designer: Poul Henningsen

PH 2/1 Wall Light by Louis Poulsen

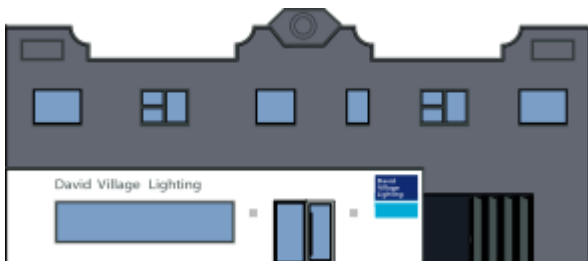
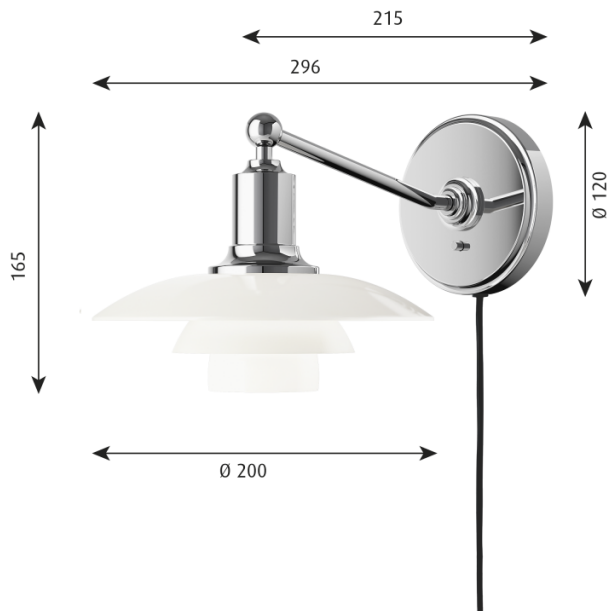
The concept behind the PH 2/1 wall light dates all the way back to 1925-26 when Poul Henningsen designed a lampshade that was made from 3 shades, creating a spiralled and concentric look. This design allows for the light source to be concealed whilst warmly diffusing the light throughout the 3 layers. This ingenious design by Henningsen started a long relationship between him and Louis Poulsen, releasing hundreds of different configurations and forms based around the lampshade.

The PH 2/1 wall lamp is a smaller design, being useful in many interiors, whether you need a bedside lamp or you need to line the hallways in your home. The sleek chrome plated structure and the beautiful glass lampshade embody vintage design and will add a classic touch to your space. Use in homes or commercial settings for a timeless wall light with a functional and soft glow.



PRODUCT SPECIFICATION

- Light Source:** 1 x Max 5W E14 LED (excluded)
- IP Code:** 20
- Dimming:** Integrated on/off switch on the product.
- Dimensions:** Shade: Ø20cm
Height: 16.5cm
Depth: 29.6cm
Wall Base: Ø12cm



For all sales and technical enquiries, please contact:

+44 (0)114 263 4266

info@davidvillagelighting.co.uk

www.davidvillagelighting.co.uk