

louis poulsen

LA8581

Louis Poulsen PH 4½-3½ Glass Table Lamp

SOURCE: <https://www.davidvillagelighting.co.uk/product/Louis-Poulsen-PH-4-3-Glass-Table-Lamp/5845>

PRODUCT DESCRIPTION

Designer: Poul Henningsen

PH 4½-3½ Glass Table Lamp by Louis Poulsen

Designed by Poul Henningsen, the PH 4½-3½ Glass table lamp has a 3 shade fixture that was made by Henningsen in the winter of 1925-26 for a large exhibition hall in Copenhagen, Denmark called "Forum". Still a relevant design today, the lampshade nicely diffuses the light throughout the layers, concealing the light source to produce a warm glow. The table lamp has a chic chrome structure that modernises the vintage form and beautifully reflects the surroundings.

The PH 4½-3½ Glass table light can be used in many interiors, whether at home or in a professional setting. The table light will provide a comfortable and inviting atmosphere and can also be used to provide a handy light for reading or tasks. Combining timeless ideals with a contemporary perspective, use on tables, desks, side tables or shelves.



PRODUCT SPECIFICATION

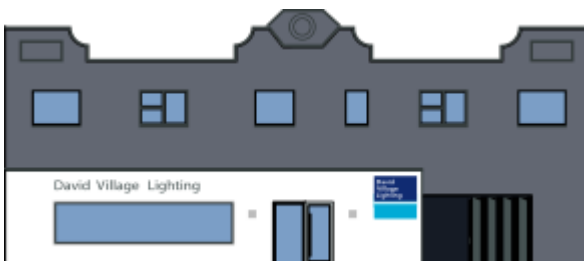
Light Source: 1 x Max 12W E27 LED (excluded)

IP Code: 20

Dimming: Integrated on/off switch on the product.

Dimensions: Shade: Ø45cm
Height: 55cm
Base: Ø24cm

Cable Length: 270cm



For all sales and technical enquiries, please contact:

+44 (0)114 263 4266

info@davidvillagelighting.co.uk

www.davidvillagelighting.co.uk