

louis poulsen

Louis Poulsen PH 3½-2½ Glass Floor Lamp

LA8576

SOURCE: <https://www.davidvillagelighting.co.uk/product/Louis-Poulsen-PH-3-2-Glass-Floor-Lamp/5839>



PRODUCT DESCRIPTION

Designer: Poul Henningsen

PH 3½-2½ Glass Floor Lamp by Louis Poulsen

The PH 3½-2½ Glass floor lamp is created by using the renowned 3 shade system designed by Poul Henningsen in the 1920s. The system allows for the light to mainly be directed downward whilst also providing a glare-free, diffused glow to fill the room. After creating the system, Henningsen collaborated with Louis Poulsen over many decades to apply the lampshade to many different forms of lighting solutions, being particularly popular in the 1930s.

This vintage and classic design is now still available to the modern customer, keeping all the elegance and refinement seen in past eras to present a timeless floor lamp that will suit any space. The PH 3½-2½ Glass floor light is available in 3 gorgeous finishes, brass, black or chrome, and will be a beautiful addition to bedrooms, lounges, offices and more.

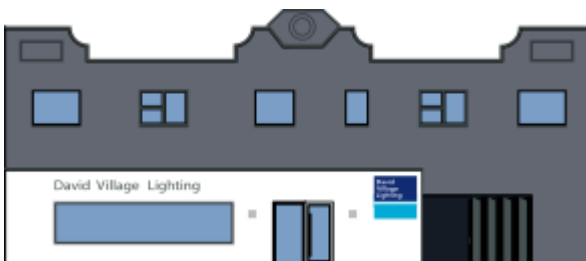
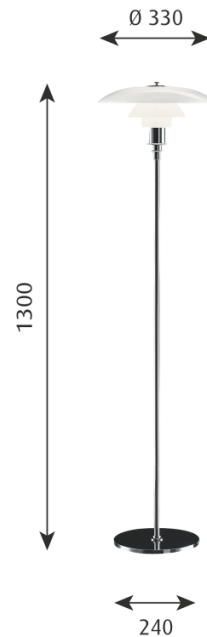
PRODUCT SPECIFICATION

Light Source: 1 x Max 10.5W E27 LED (excluded)

IP Code: 20

Dimming: In line on/off switch included on cable.

Dimensions: Shade: Ø33cm
 Height: 130cm
 Base: Ø24cm



For all sales and technical enquiries, please contact:

+44 (0)114 263 4266

info@davidvillagelighting.co.uk

www.davidvillagelighting.co.uk