

louis poulsen

Louis Poulsen PH 2/1 Stem

LA8561

SOURCE: <https://www.davidvillagelighting.co.uk/product/Louis-Poulsen-PH-21-Stem/5824>



PRODUCT DESCRIPTION

Designer: Poul Henningsen

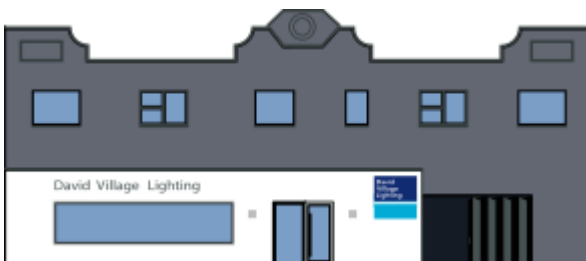
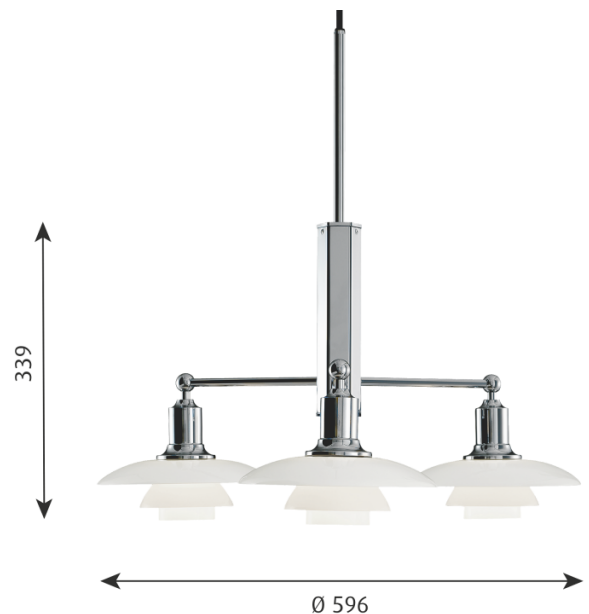
PH 2/1 Stem Fitting Light by Louis Poulsen

The PH 2/1 stem fitting is a beautiful light that uses a vintage design in a modern way. The shades were first developed by icon Poul Henningsen in 1925, who wanted to create a lampshade that concealed and diffused the light source to create a warm and comfortable glow. He designed a shade composed of 3 layers to achieve this and collaborated with Louis Poulsen for decades, creating many different types of lights suitable for many settings.

The PH 2/1 stem light was created in 2003, using Henningsen's legacy to produce a contemporary take on a chandelier whilst using timeless ideals. The stem fitting can be used in a wide variety of settings, such as dining rooms, lounges and receptions. Classic and stunning, the PH 2/1 stem will fill the room nicely with a soft and inviting illumination.

PRODUCT SPECIFICATION

- Light Source:** 3 x Max 5W E14 LED (excluded)
- IP Code:** 20
- Dimming:** Dimmable via mains phase dimming.
- Dimensions:** Height: 33.9cm
Width: 59.6cm



For all sales and technical enquiries, please contact:

+44 (0)114 263 4266

info@davidvillagelighting.co.uk

www.davidvillagelighting.co.uk