

louis poulsen

Louis Poulsen PH 2/1 Pendant

LA8551

SOURCE: <https://www.davidvillagelighting.co.uk/product/Louis-Poulsen-PH-21-Pendant/5823>



PRODUCT DESCRIPTION

Designer: Poul Henningsen

PH 2/1 Pendant Light by Louis Poulsen

The PH 2/1 pendant originates from a three lampshade design by the renowned Poul Henningsen back in 1925-1926. He sought to create a light that could evenly distribute the light whilst creating soft shadows and being glare-free. Working with Louis Poulsen until his death in 1967, this spiralled lampshade structure, as seen in the PH 2/1 pendant light, has now been used in countless combinations and configurations.

This pendant light provides a lovely, warm glow that is effective in the room and will create a comfortable atmosphere. The longevity of the design makes the pendant an instant classic, being a true hallmark of vintage design that will catch the eye in your space. Available with either a brass, black or chrome finish paired with a white opal glass lampshade, you can use the pendant lamp in a wide variety of settings, alone or in multiple, for a timeless touch.

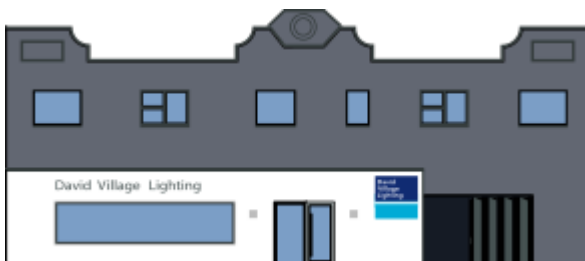
PRODUCT SPECIFICATION

Light Source: 1 x Max 5W E14 LED (excluded)

IP Code: 20

Dimming: Dimmable via mains phase dimming.

Dimensions: Shade: Ø20cm
Shade Height: 14cm



For all sales and technical enquiries, please contact:

+44 (0)114 263 4266

info@davidvillagelighting.co.uk

www.davidvillagelighting.co.uk