

Artemide

LA8049/M

Artemide Tian Xia 500 LED Suspension

SOURCE: <https://www.davidvillagelighting.co.uk/product/Artemide-Tian-Xia-500-LED-Suspension/478>



PRODUCT DESCRIPTION

Designer: Carlotta de Bevilacqua

Tian Xia 500 LED by Artemide

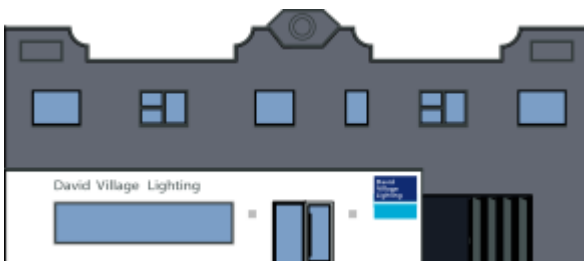
Tian Xia reduces consumption by 80% while still maintaining its performance. Light technology has evolved so much the light still supports sustainability. The suspension light employs three light sources, a direct, an indirect and a diffused light which can be managed separately. The direct downlight is located at the base of the body, with 6 LED units. The structure has a polished aluminium finish while the diffuser is thermoplastic resin with a translucent mirror finish. The diffuser emits the RGB light, which you can adjust and change the colour (see related images). Tian Xia 500 comes with a infrared remote control. Designed by Carlotta de Bevilacqua, who carries out an in depth research and creates unique and award winning designs and patents.

PRODUCT SPECIFICATION

Light Source: Direct: 42W, 3000K, 2807lumens
+
Indirect: 37W, 3000K, 3199lumens
+
Diffused: 33W (RGB)

IP Code: 20

Dimensions: Ø 50 cm
29 cm shade height
max 200 cm cable length
Ø 31 cm ceiling rose



For all sales and technical enquiries, please contact:

+44 (0)114 263 4266

info@davidvillagelighting.co.uk

www.davidvillagelighting.co.uk