

Artemide

Artemide Surf 300 Wall Light

LA8067

SOURCE: <https://www.davidvillagelighting.co.uk/product/Artemide-Surf-300-Wall-Light/366>



PRODUCT DESCRIPTION

Designer: Neil Poulton

Surf 300 by Artemide

As part of Artemide's Architectural collection, Neil Poulton designed the Surf wall light. Made of durable, aluminium material the wall light is available in a white finish. It emits an upwards, indirect light and can be dimmable via main phase dimming. The wall light is suitable for installation in hallways, bedrooms, reception and waiting rooms; a light for residential and commercial spaces.

The light is also available in an [LED version](#), only available in a white colour option. Another option, is the smaller version of the Surf, also designed by Neil Poulton, the [Microsurf](#) wall light.

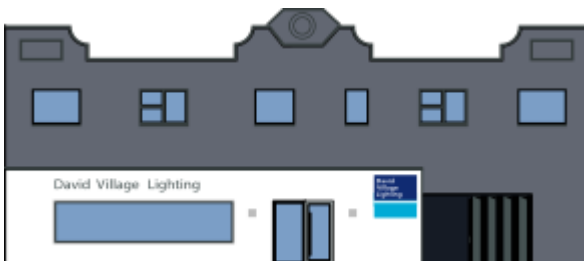
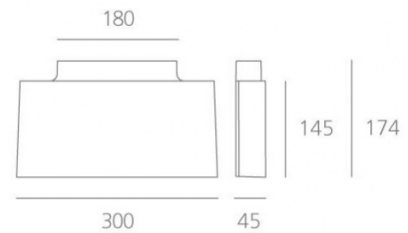
PRODUCT SPECIFICATION

Light Source: 1 x max 11W LED R7s (excluded)

IP Code: 20

Dimming: Dimmable via mains phase dimming.

Dimensions: 30 cm width
17.4 cm depth
4.5 cm height



For all sales and technical enquiries, please contact:

+44 (0)114 263 4266

info@davidvillagelighting.co.uk

www.davidvillagelighting.co.uk