

Artemide

Artemide Mesmeri Wall Light

LA8048

SOURCE: <https://www.davidvillagelighting.co.uk/product/Artemide-Mesmeri-Wall-Light/344>



PRODUCT DESCRIPTION

Designer: Eric Sole

Artemide Mesmeri Wall Light

Eric Sole, the designer, had always been interested in the evolution of raw material he could use for his lighting designs. Sole believes that a lamp should become a living thing, enlighten and comfort us when it's dark outside. The Mesmeri wall light was awarded the iF Product Design and Red Dot Awards in 2006, and the Good Product Design in 2007.

The wall light is distinguished for its sinuous, curving body made from a single piece of aluminium. The light source is hidden inside the body, thus emitting an indirect light. The halogen version of the Mesmeri is available only in a white colour option. [Mesmeri LED](#) is also available, in more colours and a choice of colour temperature (2700K or 3000K).

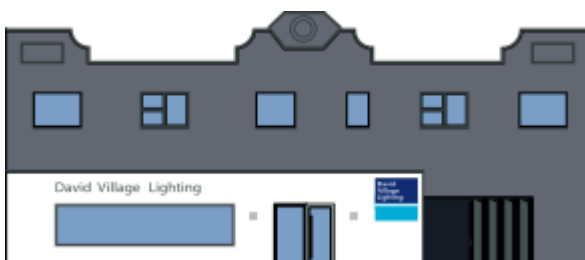
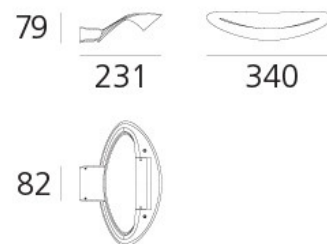
PRODUCT SPECIFICATION

Light Source: 1 x 11W LED R7s (excluded)

IP Code: 20

Dimming: Dimmable via mains phase dimming.

Dimensions: 34 cm width
22.1 cm depth
7.9 cm height



For all sales and technical enquiries, please contact:

+44 (0)114 263 4266

info@davidvillagelighting.co.uk

www.davidvillagelighting.co.uk