

**Tom
Dixon.**

LA5236/LED

Tom Dixon Beat Waist LED Pendant

SOURCE: <https://www.davidvillagelighting.co.uk/product/Tom-Dixon-Beat-Waist-LED-Pendant/21613>



PRODUCT DESCRIPTION

Designer: Tom Dixon

Beat Waist LED Pendant Light by Tom Dixon

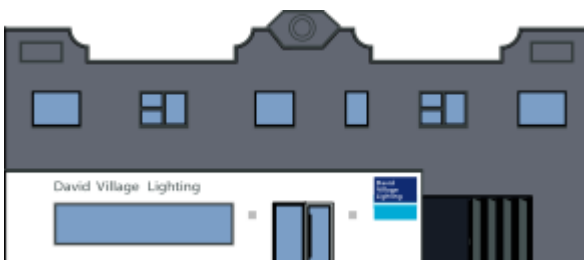
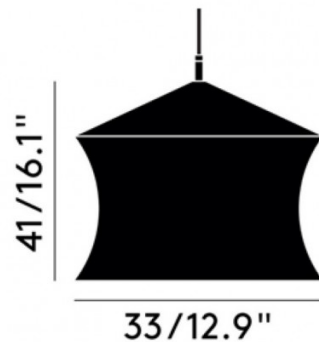
The Beat Waist pendant is now presented with an integrated LED light source for a long lasting and effective glow. The shade is made with spun brass, with a black finish on the outside and brass on the inside. The light source reflects off the inside and also has a downward directed glow to provide atmospheric lighting.

The Beat Waist LED pendant lamp has a gorgeous, sculptural design that will look amazing in many interiors. You can use alone in small spaces, hang in multiple over tables or even mix and match with other pendants from the [Tom Dixon Beat collection](#) for a varied yet consistent look.

Please note, that the LED ring is non-replaceable

PRODUCT SPECIFICATION

- Light Source:** 6W, 3000K, 800 Lumens
- IP Code:** 20
- Dimming:** Dimmable via mains phase dimming.
- Dimensions:** Ø33cm
Height: 41cm
Cable Length: 250cm



For all sales and technical enquiries, please contact:

+44 (0)114 263 4266

info@davidvillagelighting.co.uk

www.davidvillagelighting.co.uk