

NEMO

LA10382/D

**Nemo Lighting Applique a Volet
Pivotant Double Wall Light**

SOURCE: <https://www.davidvillagelighting.co.uk/product/Nemo-Lighting-Applique-a-Volet-Pivotant-Double-Wall-Light/21503>



PRODUCT DESCRIPTION

Designer: Charlotte Perriand

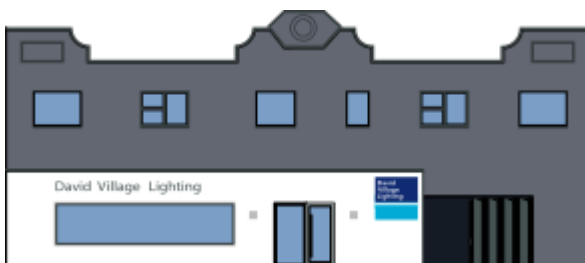
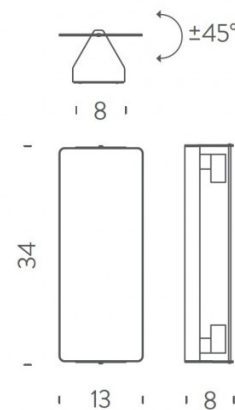
Applique à Volet Pivotant Double Wall Light by Nemo Lighting

Designed by Charlotte Perriand, the Applique à Volet Pivotant Double wall light is indicative of her style where function and minimalism meet together to create timeless classics. This wall lamp has a rectangular shape that is simple and chic and has a block colour on the front to create an impact. With 3 colours to choose from, stainless steel, natural anodized aluminium and black, you can find the right look for your interior.

The Applique à Volet Pivotant Double wall lamp provides indirect lighting that both reflects of the wall and can be slightly directed thanks to the front which can be opened outwards. You could install this wall light horizontally or vertically and you can also use other wall lights from the [Nemo Lighting Applique à Volet Pivotant collection](#) to create a gorgeous and dynamic light display.

PRODUCT SPECIFICATION

- Light Source:** 2 x Max 8W E14 LED (excluded)
- Dimming:** Dimmable via mains phase dimming
- Dimensions:** 13cm width
34cm height
8cm depth



For all sales and technical enquiries, please contact:

+44 (0)114 263 4266

info@davidvillagelighting.co.uk

www.davidvillagelighting.co.uk