

PANZERI

# Panzeri Hilow LED Pendant

LA10339

SOURCE: <https://www.davidvillagelighting.co.uk/product/panzeri-hilow-led-pendant/21165>



## PRODUCT DESCRIPTION

**Designer:** Matteo Thun

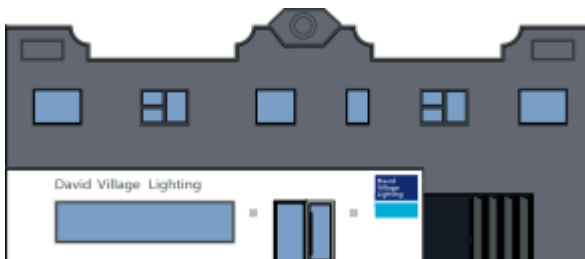
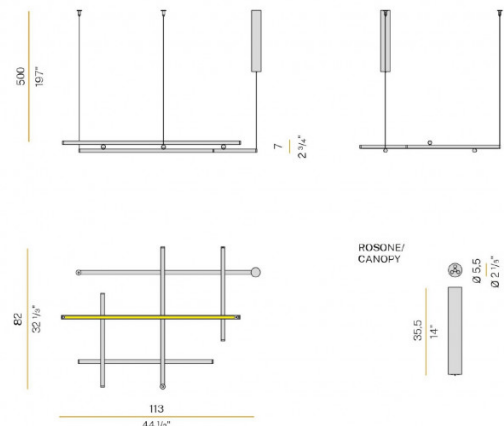
## Hilow LED Pendant Light by Panzeri

Designed by Matteo Thun in 2020, the Hilow pendant is made up from 6 linear modules that combine together to create a geometric masterpiece. The pendant is made up from a combination of either 1 indirect and 5 direct lights or 1 direct and 5 indirect lights. This allows for a versatile installation, giving you endless options for lighting your space.

The Hilow pendant light is best used in large rooms and can be used both privately and in hospitality and public settings. You can combine many pendant lights into rows, clusters or even use alone for a smaller space. The Hilow LED pendant lamp is available in 5 colours, black, white, titanium, bronze or matt brass and also with the choice of either a black or opal coloured diffuser. This pendant light will certainly add a stylish yet functional flourish to any interior.

## PRODUCT SPECIFICATION

- Light Source:** 77W, 2700K, 2118 Lumens (black diffuser)  
77W, 2700K, 5045 Lumens (opal diffuser)
- IP Code:** 20
- Dimming:** Dimmable via Dali/push to make/switch dimming systems. Please consult your electrician, additional wiring may be required on site.
- Dimensions:** Width: 113cm  
Length: 82cm  
Ceiling Rose Depth: 35.5cm  
Drop Height: 500cm



**For all sales and technical enquiries, please contact:**

+44 (0)114 263 4266

[info@davidvillagelighting.co.uk](mailto:info@davidvillagelighting.co.uk)

[www.davidvillagelighting.co.uk](http://www.davidvillagelighting.co.uk)