

**kdl**n

**KDLN Lilli Pendant Light**

LA10312

SOURCE: <https://www.davidvillagelighting.co.uk/product/KDLN-Lilli-Pendant-Light/21002>



**PRODUCT DESCRIPTION**

**Designer:** Cristina Celestino

**Lilli Pendant Light by KDLN**

The Lilli pendant, designed by Cristina Celestino, is inspired by flowers and the natural world. The pendant is made from an opal white glass lampshade that has beautiful lines and curves, shaped into a bulbous silhouette. The pendant light is also fitted with satin brass embellishments, with a small brass sphere that sits below the glass shade, being an intriguing and stunning detail.

The Lilli pendant light will be a gorgeous addition to any interior, being useful in both homes and commercial settings. The pendant lamp can be used alone in smaller spaces or configured into rows or clusters for bigger spaces. The light emits a soft glow that is inviting and also a downward-directed light that is perfect for hanging over tables and surfaces. A spectacular and stylish light suitable for any type of interior.

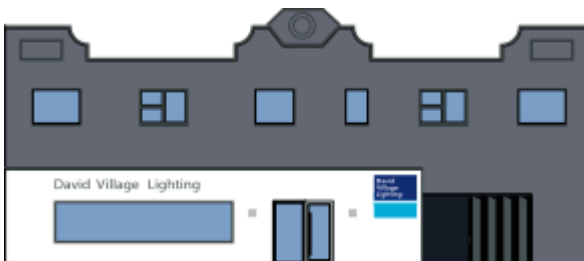
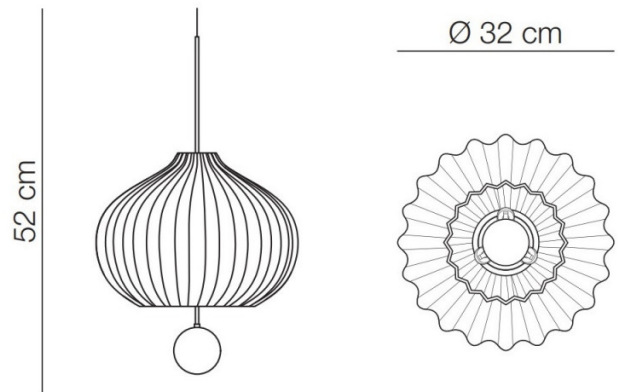
**PRODUCT SPECIFICATION**

**Light Source:** 3 x Max 42W E14 (excluded)

**IP Code:** 20

**Dimming:** Dimmable via mains phase dimming.

**Dimensions:** Ø32cm  
Shade Height: 52cm  
Ceiling Canopy: Ø12.5cm



**For all sales and technical enquiries, please contact:**

+44 (0)114 263 4266

info@davidvillagelighting.co.uk

www.davidvillagelighting.co.uk