

**louis poulsen**

# Louis Poulsen VL Ring Crown 1 Pendant

LA10018/P

SOURCE: <https://www.davidvillagelighting.co.uk/product/Louis-Poulsen-VL-Ring-Crown-1-Pendant/20907>



## PRODUCT DESCRIPTION

**Designer:** Vilhelm Lauritzen

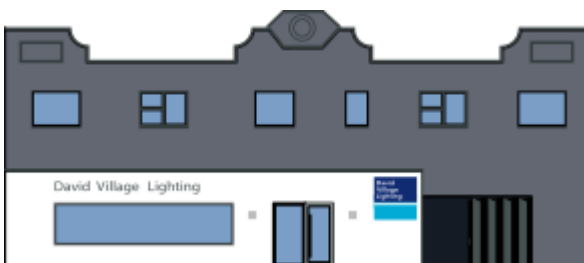
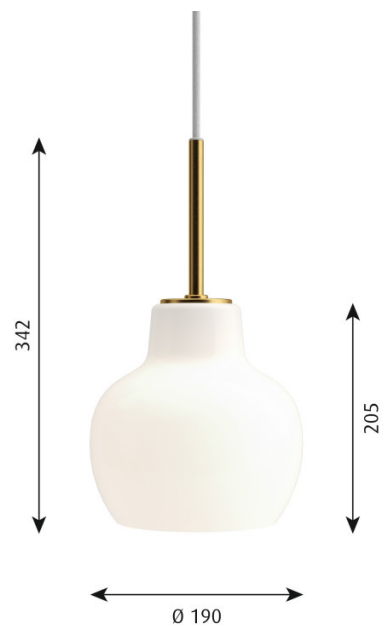
### VL Ring Crown 1 Pendant Light by Louis Poulsen

The VL Ring Crown 1 pendant was reintroduced in 2019, based on a design by Vilhelm Lauritzen from the 1940s. The pendant has a lovely lampshade that has smooth, round lines and is made from triple layered opal glass that diffuses the light source softly. The shade also has a chic brass fitting that overtime will gain a patina, adding even more character to the pendant light.

The VL Ring Crown pendant light can be used in many settings, being useful in lounges, kitchens, dining areas and reception rooms to provide a cosy and inviting atmosphere. You can use alone in smaller spaces or use in rows/clusters in bigger spaces for an effective illumination. Create a vintage and classic look in your interior, whether at home or at work.

## PRODUCT SPECIFICATION

- Light Source:** 1 x Max 12W E27 LED (excluded)
- IP Code:** 20
- Dimming:** Dimmable via mains phase dimming.
- Dimensions:** Shade: Ø19cm  
Shade Height: 20.5cm  
Height: 34.2cm



**For all sales and technical enquiries, please contact:**

+44 (0)114 263 4266

info@davidvillagelighting.co.uk

www.davidvillagelighting.co.uk