

LE KLINT Le Klint Caleo Original Pendant

LA10287

SOURCE: <https://www.davidvillagelighting.co.uk/product/Le-Klint-Caleo-Original-Pendant/20855>



PRODUCT DESCRIPTION

Designer: Rikke Frost

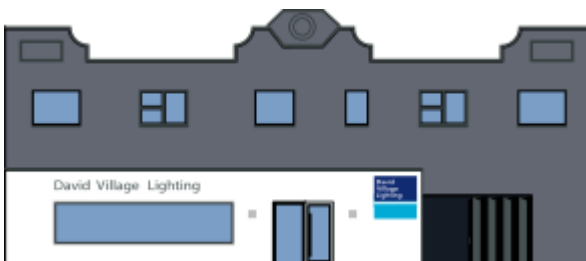
Caleo Original Pendant Light by Le Klint

The Caleo Original pendant was designed by Rikke Frost who submitted the light into the Danish competition TV show *Denmark's Next Classic* which sought to find the next furniture classic. The pendant came runner up, which is testament to the beauty and intricate design that it displays. The shade is made from paper with a stunning bronze cross-pleat which makes the pendant light eye-catching and unique.

The Caleo Original pendant light can be used in a multitude of settings but looks best when hung over a table in dining rooms and kitchens. The brass bar that holds the pendant lamp together also means the pleating can be rotated 90°, being an interactive and immersive experience. The classic and graceful spherical form will be a splendid addition to any space and will remain in style for many years to come.

PRODUCT SPECIFICATION

- Light Source:** 1 x E27 LED 25W max (excluded)
- IP Code:** 20
- Dimming:** Dimmable via mains phase dimming
- Dimensions:** Ø60cm
60cm shade height



For all sales and technical enquiries, please contact:

+44 (0)114 263 4266

info@davidvillagelighting.co.uk

www.davidvillagelighting.co.uk