

FLOS

# Flos Pochette LED Up/Down Wall Light

LA10247

SOURCE: <https://www.davidvillagelighting.co.uk/product/Flos-Pochette-LED-UpDown-Wall-Light/20691>



## PRODUCT DESCRIPTION

**Designer:** Rodolfo Dordoni

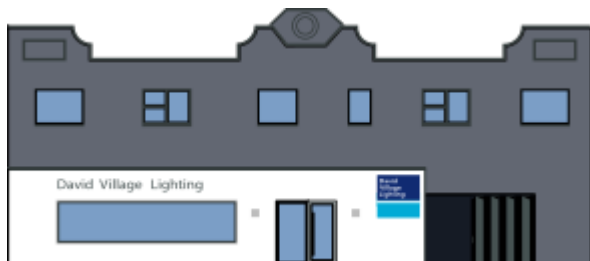
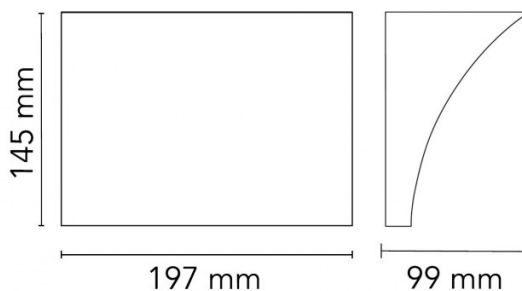
### Pochette LED Up/Down Wall Light by Flos

Designed by Rodolfo Dordoni for Flos, the Pochette LED up/down wall light is a wall sconce providing both upwards and downwards light emission. Like many Dordoni designs, simplicity is at the heart of the design of the Pochette. The simplicity of the Pochette wall lamp allows it to seamlessly blend into a multitude of settings both residentially and commercially.

The structure of the Pochette up/down wall lamp is made from pressure die-cast zamak alloy and is available in a grey, white or chrome finish. The moulded steel, galvanised white wall attachment contains the wall attachment system as well as the electrical devices. Creating a cosy atmosphere, use the Pochette LED up/down to light hallways, living areas and bedrooms.

## PRODUCT SPECIFICATION

- Light Source:** 20W, 2700K, 1707 lumens + 1.5W, 2700K, 37 lumens
- IP Code:** 20
- Dimming:** Dimmable via 1-10v dimming systems. Please consult your electrician, additional wiring may be required on site.
- Dimensions:** 14.5cm height  
19.7cm width  
9.9cm depth



**For all sales and technical enquiries, please contact:**

+44 (0)114 263 4266

[info@davidvillagelighting.co.uk](mailto:info@davidvillagelighting.co.uk)

[www.davidvillagelighting.co.uk](http://www.davidvillagelighting.co.uk)