

**Prandina Santachiara LED  
Pendant**

LA10239

SOURCE: <https://www.davidvillagelighting.co.uk/product/Prandina-Santachiara-LED-Pendant/20679>



**PRODUCT DESCRIPTION**

Designer: Sergio Prandina

**Santachiara LED Pendant Light by Prandina**

The Santachiara LED pendant is the LED version of the [Santachiara pendant light](#), using a built-in LED module to make the light more sustainable and energy-saving. The pendant is made from blown opal glass, put into the shape of a cylinder in 3 different sizes, creating a classic, timeless light that is versatile and lasting. The glass creates a soft glow, diffusing the light so it stretches far in the room. The bottom opening also allows for a downward directed light to create more impact.

The choice of 3 sizes allows you to create variety in the room if you mix and match them and also makes them perfect for big and small spaces alike. The smooth and sleek design and the versatility of the Santachiara LED pendant light makes it the perfect choice for bedrooms, lounges, dining rooms, hallways and many other spaces!

**PRODUCT SPECIFICATION**

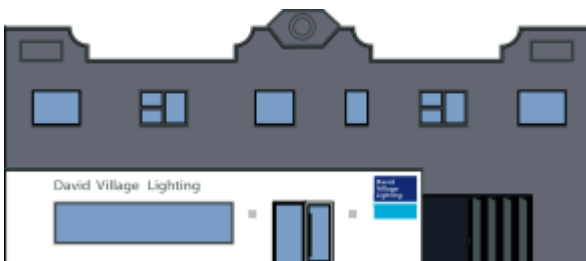
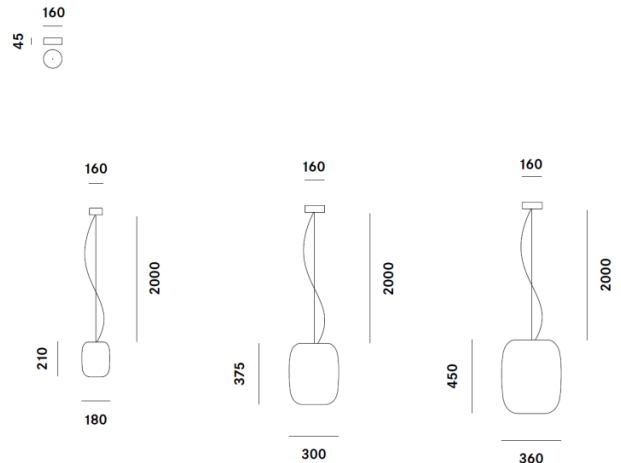
**Light Source:** S1 - 4.8W, 3000K, 720 lumens  
S3 - 9.6W, 3000K, 1034 lumens  
S5 - 13.2W, 3000K, 1417 lumens

**IP Code:** 20

**Dimming:** Dimmable via trailing edge dimming.

**Dimensions:** S1 - Ø18cm, H 21cm  
S3 - Ø30cm, H 37.5cm  
S5 - Ø36cm, H 45cm

Ø16cm ceiling rose  
2m cable length



**For all sales and technical enquiries, please contact:**

+44 (0)114 263 4266

info@davidvillagelighting.co.uk

www.davidvillagelighting.co.uk