

**Kartell**

**Kartell Smart Wood Q/Wood  
Chair**

LA10202

SOURCE: <https://www.davidvillagelighting.co.uk/product/Kartell-Smart-Wood-QWood-Chair/20618>



**PRODUCT DESCRIPTION**

**Designer:** Philippe Starck & Eugeni Quitllet

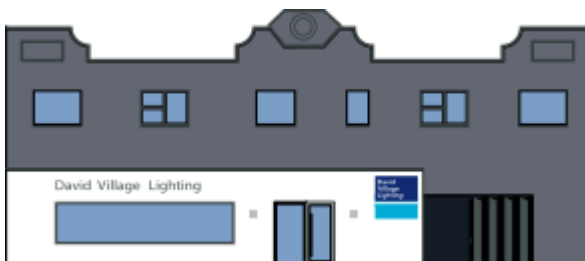
**Q/Wood Chair by Kartell**

A part of the innovative [Kartell Smart Wood collection](#), the Q/Wood chair is made from sustainable wood that is FSC certified, showing that Kartell truly loves the planet. The chair is molded from wood, with just a thin layer being used to ensure that no materials are wasted.

The concept for the chair comes from Philippe Starck who has designed many iconic chairs for Kartell over the years. With the Q/Wood, Starck has created a chair that is sustainable and supportive, with curved lined and lipped edges to make sure you feel comfortable. Available in different colours and wood finishes, the Q/Wood chair is suitable for many settings and will impress with its manufacture and environmentally friendly materials.

**PRODUCT SPECIFICATION**

**Dimensions:** 83cm chair height  
45cm leg height  
55cm width  
57cm depth



**For all sales and technical enquiries, please contact:**

+44 (0)114 263 4266

[info@davidvillagelighting.co.uk](mailto:info@davidvillagelighting.co.uk)

[www.davidvillagelighting.co.uk](http://www.davidvillagelighting.co.uk)