

NORR11

NORR11 Frames Pendant

LA10183

SOURCE: <https://www.davidvillagelighting.co.uk/product/NORR11-Frames-Pendant/20570>

PRODUCT DESCRIPTION

Designer: Anna Ohmsen & Emma Bukhave Vidarsson

Frames Pendant Light by NORR11

The NORR11 Frames pendant light was designed by Anna Ohmsen and Emma Bukhave Vidarsson in 2018 for the FSC Design Awards competition. Winning the competition, the designers were challenged by the awards to create a design that was made from wood and was both sustainable and forward-thinking. The design duo therefore created the Frames pendant, which combines human interaction and beautiful craftsmanship to produce a pendant light that is functional, intriguing and stylish.

The Frames pendant light is made from gorgeous oak, joined together with 72 brass joints to create a rotating shade that can be adjusted by the user. The rotational wood means each user can create a unique light setting, diffusing and directing the light in expressive and complex ways. At a time where technology rules how we change light settings, this pendant light brings us back to the product, using manual ways of creating the light atmosphere we want to achieve in our space.

The Frames pendant comes in 3 wood finishes, and works wonderfully in bedrooms, lounge, dining and reception areas. Use it as an ambient/decorative light by changing and moving the wooden shade or leave it completely flat, exposing the light to have a more general and direct light for the room. This pendant is dimmable when wired correctly and using a dimmable bulb, so you can produce the exact atmosphere you want in multiple ways.

Please note, that the ceiling canopy is not included.



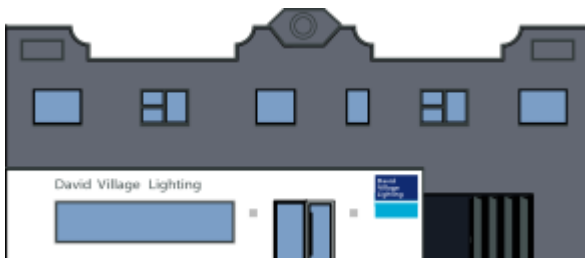
PRODUCT SPECIFICATION

Light Source: 1 x Max 4.5W E14 (excluded)

IP Code: 20

Dimming: Dimmable via mains phase dimming.

Dimensions: Height: 78.5cm
Width: 34.5cm
Cable Length: 400cm



For all sales and technical enquiries, please contact:

+44 (0)114 263 4266

info@davidvillagelighting.co.uk

www.davidvillagelighting.co.uk