

Artemide

LA4691/A

Artemide Aggregato Saliscendi Pendant

SOURCE: <https://www.davidvillagelighting.co.uk/product/Artemide-Aggregato-Saliscendi-Pendant/20490>



PRODUCT DESCRIPTION

Designer: Enzo Mari & Giancarlo Fassina

Agreggato Saliscendi by Artemide

The Rise & Fall version of the Aggregato pendant by Artemide. Designed by Enzo Mari and Giancarlo Fassina, two well established names in Architecture and interior design. The Aggregato Scaliscendi pendant light is adjustable, and can have a drop of minimum 1.35m to 3.35m. The pendant comes in two shapes, a metal cone in two sizes or a glass sphere diffuser in two sizes.

Additionally, you can choose to add a decentralisation kit to the pendant at an additional cost and create your own design. Please [contact us](#) for further information and pricing.

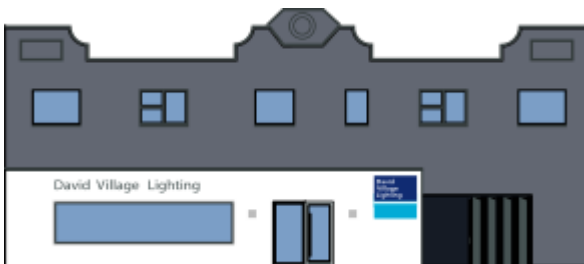
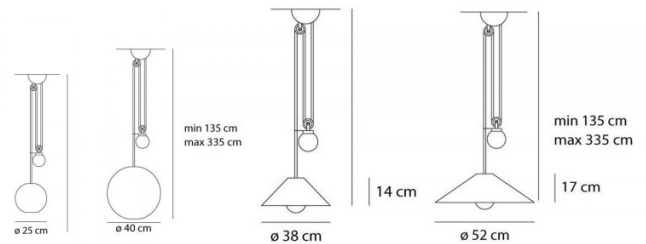
PRODUCT SPECIFICATION

Light Source: 1 x max 15W LED E27 (excluded)

IP Code: 20

Dimming: Dimmable via mains phase dimming.

Dimensions: **Cone 38** - 14 x 38 cm
Cone 53 - 17 x 53 cm
Sphere 25 - Ø 25 cm
Sphere 40 - Ø 40 cm
 1.35m to 3.35m drop
 2m. max cord length



For all sales and technical enquiries, please contact:

+44 (0)114 263 4266

info@davidvillagelighting.co.uk

www.davidvillagelighting.co.uk