



Bover Domita S/20 Pendant

LA10113

SOURCE: <https://www.davidvillagelighting.co.uk/product/Bover-Domita-S20-Pendant/20373>

PRODUCT DESCRIPTION

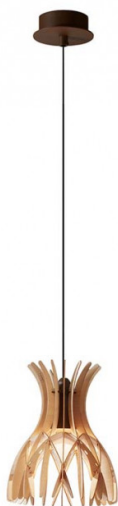
Designer: Benedetta Tagliabue

Bover Domita S/20 pendant lights

The Bover Domita S/20 Pendant is an evolution of the iconic Dome range designed by Joanna Bover in 2015. 'Domita' is a smaller version of the original pendant lights, ensuring the beautiful design is available for smaller spaces and residential homes.

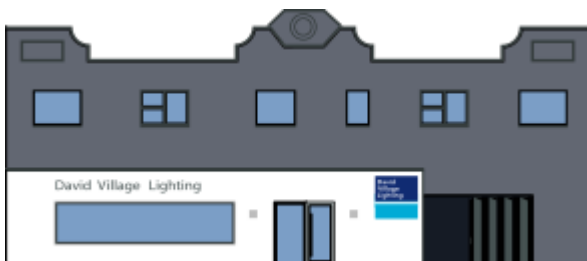
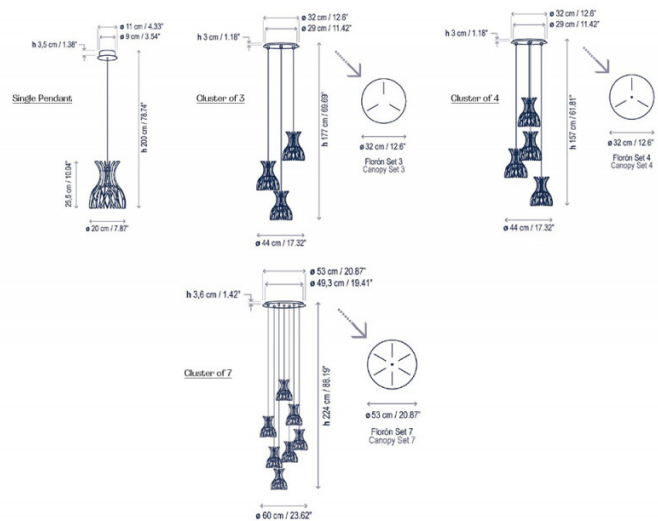
Each S/20 Pendant is handmade from natural materials and, thanks to the wooden diffusor, the light emitted is warm and inviting. This pendant is fantastic lighting solution for rooms that require a calm ambience. The neutral colour pallet and understated size of the Domita Pendant can make for an eye-catching installation in your space, displayed as part of a cluster or hung individually. The design is a perfect addition to social areas such as living rooms or dining rooms where Domita can create the most impact. It also makes a beautiful bedside lamp, due to it's size and the glare free output of light.

The S/20 Pendant comes complete with a standard central ceiling canopy, cable lengths can be adjusted upon installation to suit the requirements of the room.



PRODUCT SPECIFICATION

- Light Source:** Single pendant: 1 x Max 8W GU10 LED (excluded)
- IP Code:** 20
- Dimming:** Dimmable via Triac dimming.
- Dimensions: Single:**
 - Shade: Ø20cm
 - Shade Height: 25.5cm
 - Maximum Drop: 200cm
 - Ceiling Canopy: Ø11cm



For all sales and technical enquiries, please contact:

+44 (0)114 263 4266

info@davidvillagelighting.co.uk

www.davidvillagelighting.co.uk