

NEMO

**Nemo Lighting Projecteur 365
Pendant Light**

LA10107/P

SOURCE: <https://www.davidvillagelighting.co.uk/product/Nemo-Lighting-Projecteur-365-Pendant-Light/20348>



PRODUCT DESCRIPTION

Designer: Le Corbusier

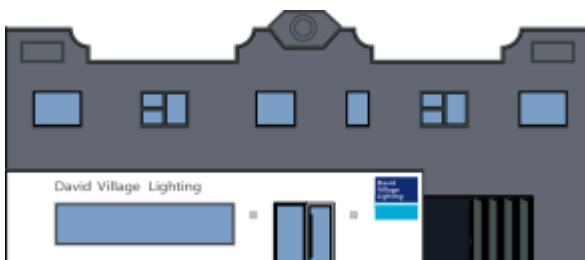
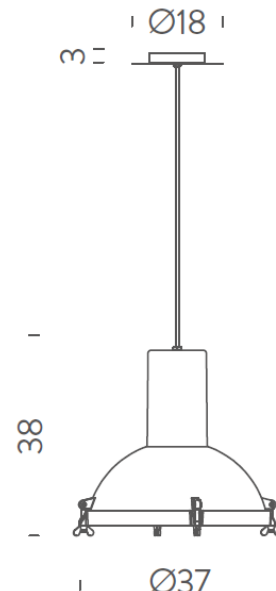
Projecteur 365 Pendant by Nemo Lighting

Originally designed by Le Corbusier in 1954, the Projecteur 365 design was reinvigorated in 2012 by Nemo Lighting with this pendant light and their wider collection. Intended for the Chandigarh High Court of Justice, this light is now widely available and can be used in a variety of commercial and home settings.

With the option of a dimmable light, with use of a dimmable bulb and an opal glass diffuser, this pendant sets the right mood and looks best as a feature light over a table. With three different colours, you can mix and match to create a dynamic light feature by clustering several pendants together. Pair with some 165 or 365 wall/ceiling lights to create a room which is truly inspired by Le Corbusier's vision.

PRODUCT SPECIFICATION

- Light Source:** 1 x E27 150W max (excluded)
- IP Code:** 30
- Dimming:** Dimmable via mains phase dimming
- Dimensions:** 38 cm height
 Ø37 cm lamp shade
 Ø18 cm canopy
 3m cable length



For all sales and technical enquiries, please contact:

+44 (0)114 263 4266

info@davidvillagelighting.co.uk

www.davidvillagelighting.co.uk