

**NEMO**

LA10091/HP

## Nemo Lighting In The Wind Horizontal LED Pendant

SOURCE: <https://www.davidvillagelighting.co.uk/product/Nemo-Lighting-In-The-Wind-Horizontal-LED-Pendant/20336>



### PRODUCT DESCRIPTION

**Designer:** Arihiro Miyake

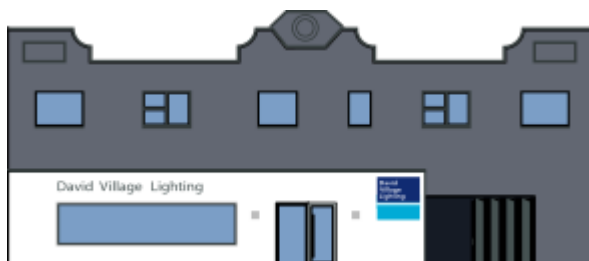
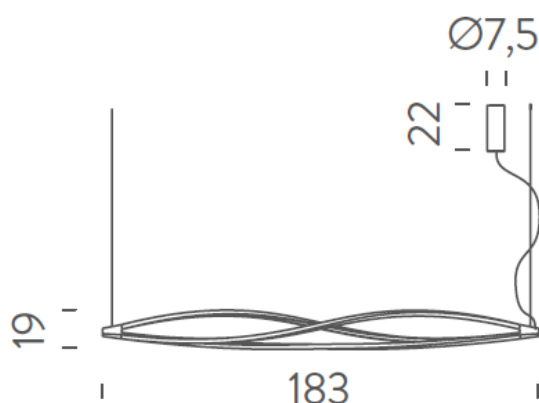
### In The Wind Horizontal by Nemo Lighting

Designed by Arihiro Miyake as an exploration of modern LED technology, the In The Wind Horizontal Pendant is part of his wider [In The Wind collection](#), distributed by Nemo Lighting. The frame is made of aluminium, moulded into a coiled, contorted shape, creating a modernistic and stylish pendant that will impress as a suspended feature light. With an intergrated LED light, this pendant creates a 360° diffused glow which is both widespread and warm.

Perfect for lighting dining tables to boardroom tables, this light works best in big room as part of a comtemporary design scheme. With a dimmable feature and available in four colours, the In The Wind Horizontal Pendant is a must have for setting the right atmosphere and providing an innovative centrepiece for your room.

### PRODUCT SPECIFICATION

<b>Light Source:</b>	58W, 2700K/3000K, 2850 lumens
<b>IP Code:</b>	20
<b>Dimming:</b>	Dimmable via DALI/Push to make. Please consult your electrician, additional wiring may be required on site.
<b>Dimensions:</b>	22 x 7.5 cm ceiling canopy 183 cm width 19 cm height 3m metal cable length 5m electric cable length



**For all sales and technical enquiries, please contact:**

+44 (0)114 263 4266

[info@davidvillagelighting.co.uk](mailto:info@davidvillagelighting.co.uk)

[www.davidvillagelighting.co.uk](http://www.davidvillagelighting.co.uk)