

NEMO

LA10087

Nemo Lighting Crown Major Chandelier

SOURCE: <https://www.davidvillagelighting.co.uk/product/Nemo-Lighting-Crown-Major-Chandelier/20326>



PRODUCT DESCRIPTION

Designer: Jehs+Laub

Nemo Lighting Crown Major Chandelier

Jehs + Laub are the designer duo behind the Crown chandeliers. The Crown is a modern reinterpretation of the traditional candle chandeliers. Crown Major is not even the largest in the Crown family, but it takes 30 light bulbs and is available in 5 finish options. You can selected matt white, matt black, painted gold or polished aluminium. The Crown is also available in plated gold and plated black, please [contact us](#) for further information and pricing.

Crown Major suspension light comes with a transparent cable, 3.5 metres long, but a red cable can be available on request. If you prefer, the Crown is available with a G9 LED kit if you prefer an LED light source you can [contact us](#) for more information. There is also a smaller chandelier, part of the Crown family, the [Crown Minor](#).

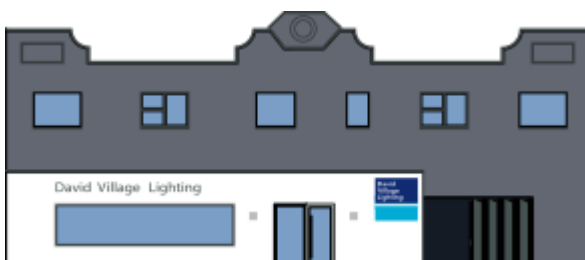
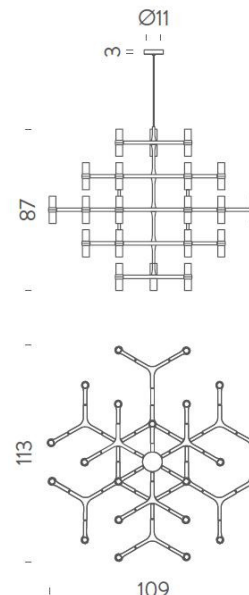
PRODUCT SPECIFICATION

Light Source: 30 x max 25W G9 QT-14 (excluded)

IP Code: 20

Dimming: Dimmable via mains phase dimming.

Dimensions: 113 cm length
109 cm width
87 cm height
3.5 m cable length



For all sales and technical enquiries, please contact:

+44 (0)114 263 4266

info@davidvillagelighting.co.uk

www.davidvillagelighting.co.uk