



# Virvel pendant by Orsjo Belysning

LA10038

SOURCE: <https://www.davidvillagelighting.co.uk/product/Virvel-pendant-by-Orsjo-Belysning/20272>

## PRODUCT DESCRIPTION

### Orsjo Belysning Virvel Pendant light

The idea behind the Virvel pendant lights was to create something which is simple, effective and environmentally friendly. The Virvel's shade is made from one piece of circular paper to make unique and interesting shapes, the design comes in single or double shades. The use of recycled handmade paper is a really beautiful and effective way of creating an environmentally conscious product.

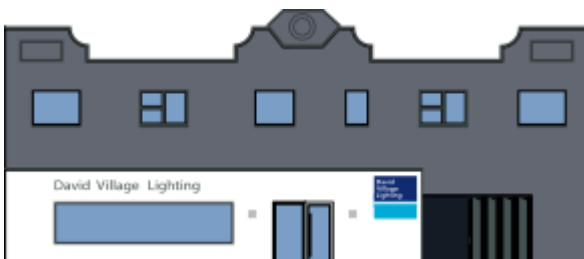
The design has taken its name from the Swedish word for Vorex or whirlwind, this is reflected in the conical forms of the paper folds.

Designed by Ingegerd Råman for Orsjo, Virvel is the perfect diffused light to create ambience within spaces such as living rooms, bedrooms or social spaces.

Ingegerd Råman is a hugely influential designer across Scandinavia, she predominantly works with ceramic and glass. Råman wanted to work with paper, the idea was to use minimal and sustainable materials to create something minimal and elegant. The paper is made from Sweden's oldest papermill which is 50 km again from Orsjo's factory.

## PRODUCT SPECIFICATION

<b>Light</b>	Single shade: 1 x max 5.3W LED E14 (excluded)
<b>Source:</b>	Double shade: 2 x max 5.3W LED E14 (excluded)
<b>Dimming:</b>	Dimmable via mains phase dimming
<b>Dimensions:</b>	Single shade
	Ø34cm shade
	25cm shade height
	160cm cable length
	Double shade
	Ø45cm shade
	30cm shade height
	160cm cable length



For all sales and technical enquiries, please contact:

+44 (0)114 263 4266

[info@davidvillagelighting.co.uk](mailto:info@davidvillagelighting.co.uk)

[www.davidvillagelighting.co.uk](http://www.davidvillagelighting.co.uk)