

LE KLINT

Le Klint Lamella Plafond Ceiling / Wall Light

LA5075/PL

SOURCE: <https://www.davidvillagelighting.co.uk/product/Le-Klint-Lamella-Plafond-Ceiling-Wall-Light/20257>

PRODUCT DESCRIPTION

Designer: Jonah Takagi & Hallgeir Homstvedt

Le Klint Lamella Plafond Ceiling / Wall Light

An extension of the [Le Klint Lamella collection](#), the Plafond wall and ceiling light is a design inspired by the gills of wild mushrooms. The designers, Takagi and Homstvedt, collaborated to create this organic light with the characteristic pleated Le Klint shade. The shade is made of plastic and as always folded by the skilful employees at Le Klint's factory, using the traditional method of Plica.

With two sizes available, the smaller 235 and larger 236, and the choice of either golden or aluminium finishes, the Lamella Plafond is ideal for creating a cosy atmosphere in a bedroom, proving diffused, soft light.



PRODUCT SPECIFICATION

Light Source: 2 x E27 LED 6W max (excluded)

IP Code: 20

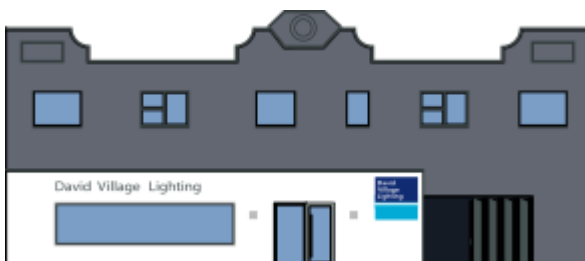
Dimming: Dimmable via mains phase dimming

Dimensions: 235 - Ø35cm, H 12cm
236 - Ø50cm, H 13cm



12 / 13 cm

Ø35 / Ø50 cm



For all sales and technical enquiries, please contact:

+44 (0)114 263 4266

info@davidvillagelighting.co.uk

www.davidvillagelighting.co.uk