



Orsjo Belysning Boa Pendant Light

LA10024

SOURCE: <https://www.davidvillagelighting.co.uk/product/Orsjo-Belysning-Boa-Pendant-Light/20253>



PRODUCT DESCRIPTION

Designer: Gert Wingardh & Sara Helder

Boa Pendant by Orsjo Belysning

The Boa collection was designed by Gert Wingårdh & Sara Helder for Orsjo Belysning, a bold form which provides focused downlight for dining or task areas. Boa was inspired by the snake, its elongated form is covered in black leather for a sleek and minimal look. The slightly wider trumpeted end allows for a broader beam of light to bathe the space below.

This design is ideal for spaces in need of focused illumination such as eating areas, kitchen islands or even over a meeting table. Boa is a versatile design which can work well in an array of interiors both domestic and commercial.

Care advice:

Wipe the surface with a dry soft cloth.

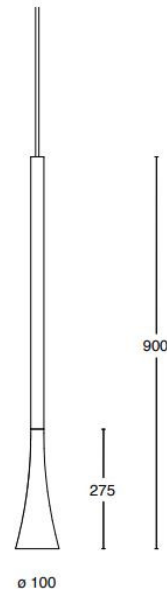
Do not use water or strong solvents, it will damage the surface.

PRODUCT SPECIFICATION

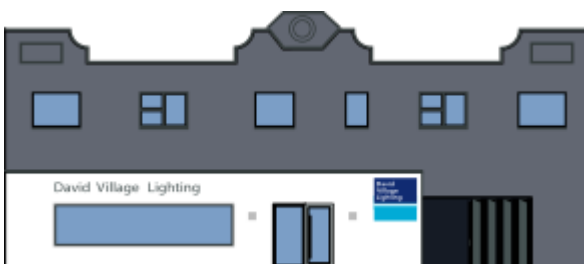
Light Source: 1 x Max 5.5W GU10 PAR16 LED (excluded)

Dimming: Dimmable via mains phase dimming.

Dimensions: Shade: Ø10cm
Shade Height: 27.5cm
Cable Length: 250cm



BOA CEILING



For all sales and technical enquiries, please contact:

+44 (0)114 263 4266

info@davidvillagelighting.co.uk

www.davidvillagelighting.co.uk