

MUUTO

Muuto Strand Closed Pendant

LA10023/C

SOURCE: <https://www.davidvillagelighting.co.uk/product/Muuto-Strand-Closed-Pendant/20249>



PRODUCT DESCRIPTION

Designer: Benjamin Hubert

Muuto Strand Closed Pendant

Designed by Benjamin Hubert, the Muuto Strand Closed Pendant is an ideal statement piece in any room. Strand Closed is ideal hung low over a dining table, creating a warm and ambient setting. Alternatively, Strand Closed pendant can be teamed with different sizes of the [Strand Open Pendants](#) to create a stunning cluster of lighting.

The semi-translucent shade of the Muuto Strand provides a soft diffused light in addition to direct light through the small openings at the top and bottom of the shade. The Strand shades are made from a steel frame covered with a polymer cocoon resin outer layer. Strand pendants gain their name from the fine strands visible within a cocoon-like coating.

PRODUCT SPECIFICATION

Light Source: 1 x Max 25W LED E27 (excluded)

IP Code: 20

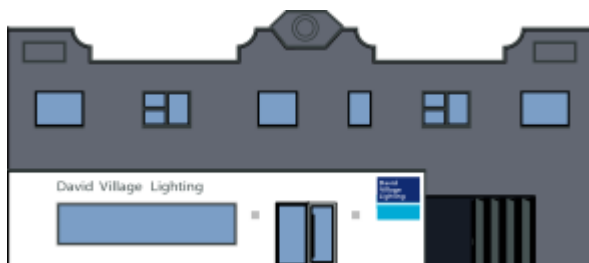
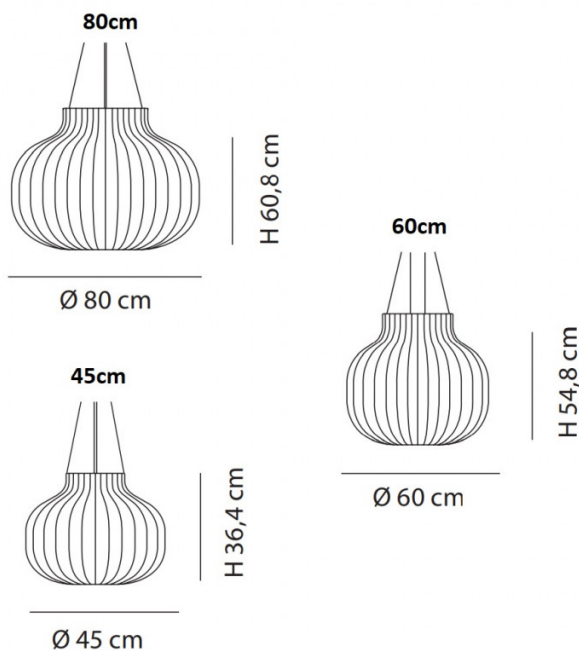
Dimming: Dimmable via mains phase dimming.

Dimensions: **Small:** Ø45cm x 36.4cm

Medium: Ø60cm x 54.8cm

Large: Ø80cm x 60.8cm

Cable Length: 500cm



For all sales and technical enquiries, please contact:

+44 (0)114 263 4266

info@davidvillagelighting.co.uk

www.davidvillagelighting.co.uk