

Artemide

Artemide nh S3 14 Cluster Light

LA6052

SOURCE: <https://www.davidvillagelighting.co.uk/product/Artemide-nh-S3-14-Cluster-Light/20155>



PRODUCT DESCRIPTION

Designer: Neri&Hu

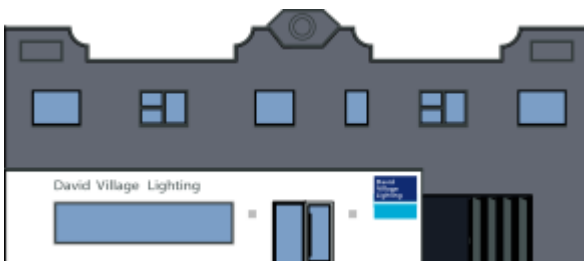
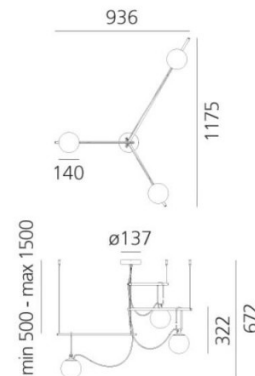
Artemide nh S3 14 chandelier

The nh collection is completed with S3 14 chandelier, a three piece pendant. Three black brass rods are at an obtuse angle to each other, all balancing the glass sphere at the edge. Neri & Hu continue to produce designs that combine innovation with Oriental tradition and culture. At the same time, the designers choose to work with contrasting materials while the selection of a low consumption LED lamp allows for a soft and sustainable light.

A design for all interiors, the nh cluster light is a dynamic, non-static light that is both simple and practical. The S3 14 cluster was based on the Neri & Hu principle, that research should be used a tool for design; given that each project will have its own contextual issues.

PRODUCT SPECIFICATION

- Light Source:** 3 x Max 5W E14 LED DIM (excluded)
- IP Code:** 20
- Dimming:** Dimmable via mains phase dimming.
- Dimensions:** Diffuser: Ø14cm  
Width: 93.6 cm  
Length: 117.5cm  
Drop Height: 117.2cm -217.2cm  
Ceiling Canopy: Ø13.7cm



For all sales and technical enquiries, please contact:

+44 (0)114 263 4266

info@davidvillagelighting.co.uk

www.davidvillagelighting.co.uk