

FLOS

# Flos Noctambule Low Cylinder and Bowl LED Pendant

LA6046

SOURCE: <https://www.davidvillagelighting.co.uk/product/Flos-Noctambule-Low-Cylinder-and-Bowl-LED-Pendant/20149>



## PRODUCT DESCRIPTION

Designer: Joris Laarman

### Noctambule Low Cylinder & Bowl LED Pendant Light by Flos

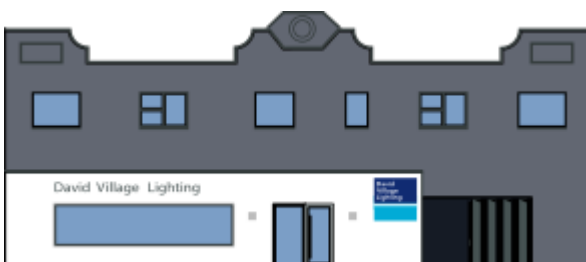
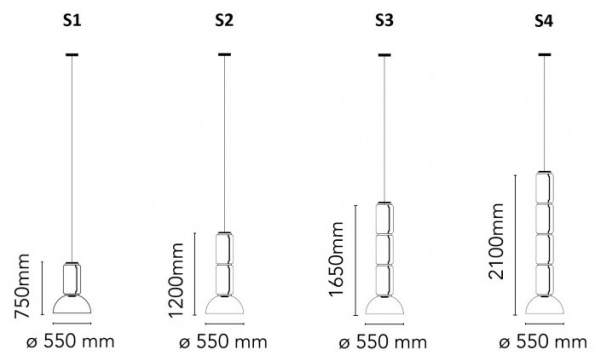
Two glass modules, a bowl and a cylinder, come together to form the Noctambule pendant light. Designed by Konstantin Grcic for Flos, the pendant has two LED rings at the top and where the cylinder meets the bowl. The Noctambule Low emits a direct downlight, while the LED rings make the lamp immediately to stand out in a room. Ideal for hanging above a dining table and especially useful in high ceiling rooms to add a dramatic effect.

The Noctambule Suspension is available in four sizes, the Noctambule S1 has one low cylinder and bowl, Noctambule S2 has two low cylinders and a bowl, Noctambule S3 comes with three low cylinders and the bowl and the longest and largest version is Noctambule S4 with 4 cylinders and a bowl.

## PRODUCT SPECIFICATION

- Light Source:**
  - S1** - 2x 9W & 1x 18W, 2700K, 1007 lumens
  - S2** - 3x 9W & 1x 18W, 2700K, 1293 lumens
  - S3** - 4x 9W & 1x 18W, 2700K, 1579 lumens
  - S4** - 5x 9W & 1x 18W, 2700K, 1865 lumens
- IP Code:** 20
- Dimming:** Dimmable via 1-10V/Dali/Push dimming systems. Please consult your electrician, additional wiring may be required on site.
- Dimensions:**
  - S1** - Ø55cm, H 75cm
  - S2** - Ø55cm, H 120cm
  - S3** - Ø55cm, H 165cm
  - S4** - Ø55cm, H 210cm

400 cm cable length



For all sales and technical enquiries, please contact:

+44 (0)114 263 4266

info@davidvillagelighting.co.uk

www.davidvillagelighting.co.uk