

Resident

# Resident Bloom Pendant

LA6024

SOURCE: <https://www.davidvillagelighting.co.uk/product/Resident-Bloom-Pendant/20120>



## PRODUCT DESCRIPTION

**Designer:** Tim Rundle

## Resident Bloom Pendant

The Resident Bloom Pendant, designed by Tim Rundle, embodies the graceful essence of paper lanterns. Available in two sizes, its frosted blown glass shade and perforated mesh core create a glowing, textured interior while directing light downwards. This unique interplay of materials produces a captivating lit effect, enhancing both residential and commercial spaces.

Whether hung individually or in clusters, the Bloom Pendant makes a stunning focal point in kitchens, dining areas, or hallways. Its sleek, timeless design ensures it blends seamlessly with various interior styles, while its soft glow creates a welcoming and refined atmosphere.

## PRODUCT SPECIFICATION

**Light Source:** 1 x Max 5W E27 LED (Included)

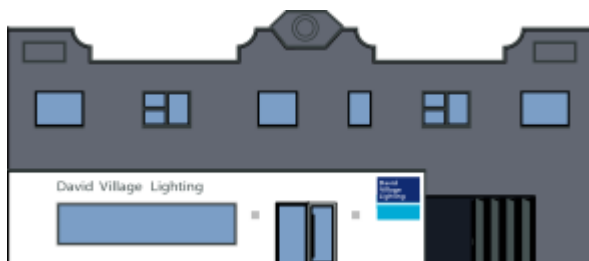
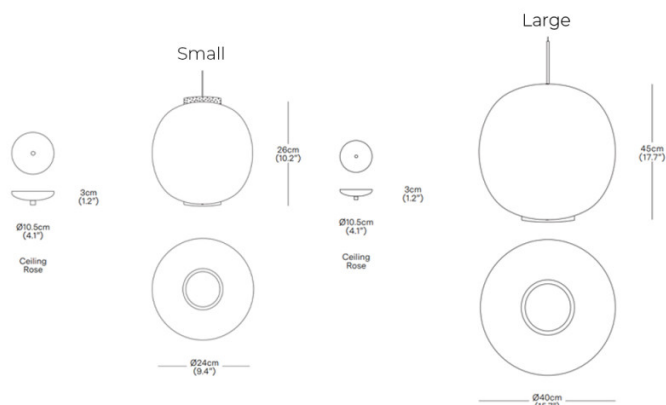
**IP Code:** 20

**Dimming:** Dimmable via mains phase dimming.

**Dimensions: Small**  
Height: 26cm  
Shade: Ø24cm

**Large**  
Height: 45cm  
Shade: Ø40cm

Canopy (Both Sizes): Ø10.5cm  
Canopy Height (Both Sizes): 3cm  
Cable Length (Both Sizes): 20-200cm



**For all sales and technical enquiries, please contact:**

+44 (0)114 263 4266

[info@davidvillagelighting.co.uk](mailto:info@davidvillagelighting.co.uk)

[www.davidvillagelighting.co.uk](http://www.davidvillagelighting.co.uk)