



Warm Nordic Opal Shade Pendant

LA10182

SOURCE: <https://www.davidvillagelighting.co.uk/product/Warm-Nordic-Opal-Shade-Pendant/20103>



PRODUCT DESCRIPTION

Designer: Svend Aage Holm-Sørensen

Warm Nordic Opal Shade Pendant

The Opal Shade Pendant was originally designed in the 1950s by Danish designer, Svend Aage Holm-Sørensen. The body of the Opal Shade is made entirely of opal glass, diffusing light into a soft, pleasant glow. Surrounding the body is a curved shade that reflects the light downwards, filling the room with light. The pendant features solid brass detailing and grooves in its metallic shade. This is a testament to Holm-Sørensen's experience as an ornamental steel worker and his attention to detail. The grooves in the shade allow light to escape, creating an elegant and appealing display.

The Opal Shade Pendant makes a beautiful feature above a dining room table or installed as multiples, lining the length of a hallway. The diffused lighting will add a soft, welcoming glow to any interior and, with a wide range of colour finishes available, The Opal Shade Pendant will suit many styles and decors. Each pendant is finished in Warm Nordic's exclusive silk-matt colour quality, which ensures quality and durability.

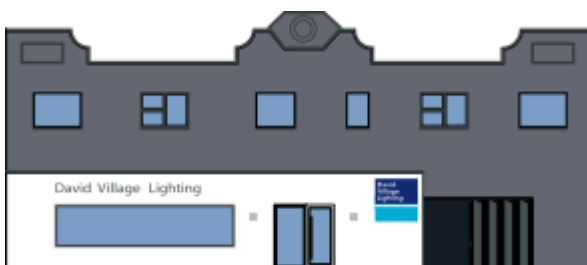
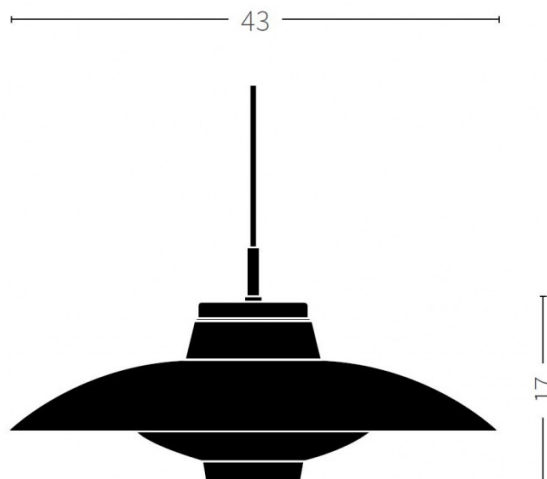
PRODUCT SPECIFICATION

Light Source: 1 x Max 25W E27 (excluded)

IP Code: 20

Dimming: Non-Dimmable.

Dimensions: Ø: 43cm
Height: 17cm
Cable Length: 300cm



For all sales and technical enquiries, please contact:

+44 (0)114 263 4266

info@davidvillagelighting.co.uk

www.davidvillagelighting.co.uk