



Warm Nordic Opal Arch Pendant

LA6011

SOURCE: <https://www.davidvillagelighting.co.uk/product/Warm-Nordic-Opal-Arch-Pendant/20101>



PRODUCT DESCRIPTION

Designer: Svend Aage Holm-Sørensen

Arch pendant by Warm Nordic

The Opal Arch pendant's glass is three layered (a choice of the Danish designer Svend Aage Holm-Sørensen) creating a warm indirect light. The final layer of glass is sandblasted to create a soft matt finish with no reflection. A steel sculpture encases the glass and brass details complete the elegance of the Opal Arch pendant.

It can stand beautifully displayed as a single pendant or in a cluster with other Arch pendants.

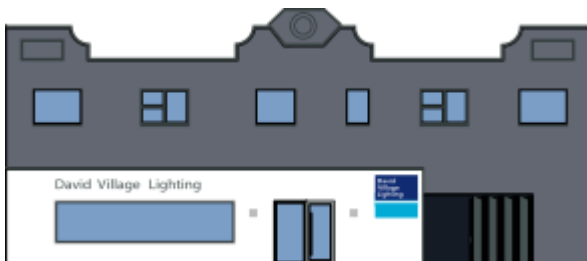
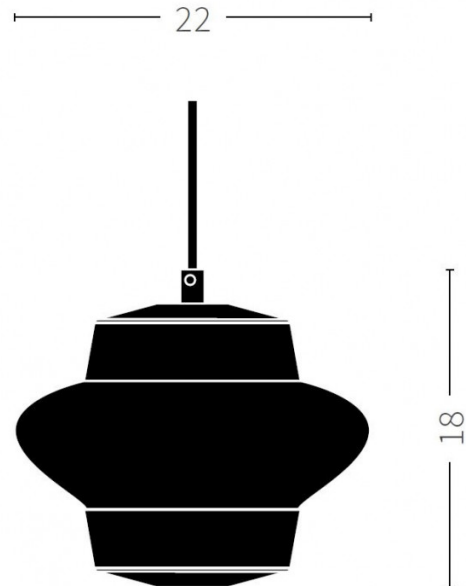
PRODUCT SPECIFICATION

Light Source: 1 x E27 25W max (excluded)

IP Code: 20

Dimming: Non-dimmable

Dimensions: 22cm width
18cm height



For all sales and technical enquiries, please contact:

+44 (0)114 263 4266

info@davidvillagelighting.co.uk

www.davidvillagelighting.co.uk