



# Warm Nordic Bloom Table Lamp

LA6003

SOURCE: <https://www.davidvillagelighting.co.uk/product/Warm-Nordic-Bloom-Table-Lamp/20093>

## PRODUCT DESCRIPTION

**Designer:** Svend Aage Holm-Sørensen

### Warm Nordic Bloom Table Lamp

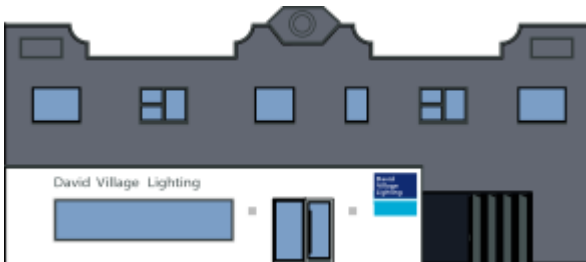
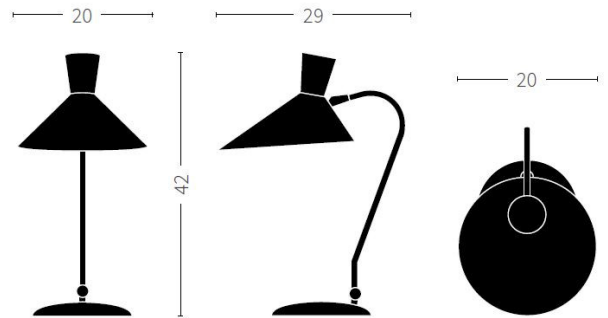
The Bloom Table Lamp was designed by Danish designer Svend Aage Holm-Sørensen. Originally designed in the 1950s, the lamp remained so popular that Warm Nordic reintroduced it to their collection. The sharp lines and elegant profile of The Bloom Table Lamp make up one of Svend Aage Holm-Sørensen's most iconic designs, helping it find a place in contemporary interiors to this day. Perfect for use as a task light on a desk or bedside table as well as adding a touch of class to any room.

The Bloom Table Lamp is available in two finishes, Warm White and Black Noire, both featuring a solid brass frame and a brass ring detail around the shade. This is a testament to Holm-Sørensen's experience as an ornamental metal worker and his appreciation for the materials he used. Another fine detail on this lamp is a ring of small, characteristic holes around the shade, which add another dimension to the emitted light. Every lamp is finished in Warm Nordic's exclusive silk-matte colour quality which ensures a durable yet luxurious finish.



## PRODUCT SPECIFICATION

- Light Source:** 1 x Max 25W E14 (excluded)
- IP Code:** 20
- Dimming:** Integrated on/off switch on the product.
- Dimensions:** Shade: Ø20cm  
Height: 42cm  
Depth: 29cm  
Cable Length: 250cm



**For all sales and technical enquiries, please contact:**

+44 (0)114 263 4266

[info@davidvillagelighting.co.uk](mailto:info@davidvillagelighting.co.uk)

[www.davidvillagelighting.co.uk](http://www.davidvillagelighting.co.uk)