



Warm Nordic Bloom Pendant

LA6002

SOURCE: <https://www.davidvillagelighting.co.uk/product/Warm-Nordic-Bloom-Pendant/20092>



PRODUCT DESCRIPTION

Designer: Svend Aage Holm-Sørensen

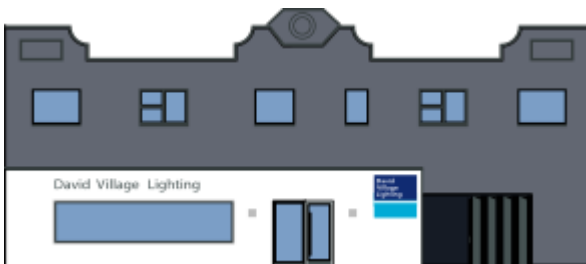
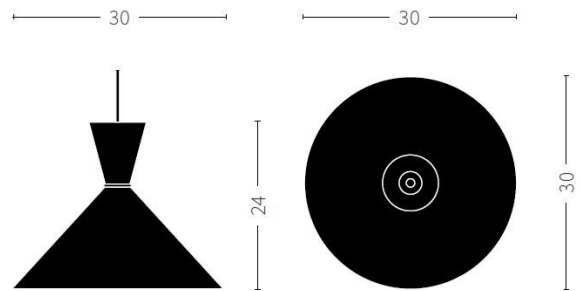
Warm Nordic Bloom Pendant

The Bloom Pendant was originally designed in the 1950s by Danish designer Svend Aage Holm-Sørensen. The elegant silhouette is a testament to Holm-Sørensen's style. As an ornamental metal worker, Holm-Sørensen appreciated the beauty of metals in their natural form and would often showcase this in his work. The minimalistic design features a solid brass ring around the shade; an ornamental touch that doesn't take away from the quiet beauty of the shade.

The wide conical shape of The Bloom Pendant helps to spread light far, filling the room with light. The downward directional light makes this pendant perfect for hanging above a table, desk, or kitchen island. The Bloom Pendant is available in three variants: Black Noire, Warm White, and a more playful striped variant. Each variant is finished in Warm Nordic's exclusive silk matt colour quality, ensuring a luxurious finish that is both beautiful and durable.

PRODUCT SPECIFICATION

- Light Source:** 1 x Max 25W E27 (excluded)
- IP Code:** 20
- Dimming:** Dimmable via mains phase dimming.
- Dimensions:** Shade: Ø30cm
Height: 24cm



For all sales and technical enquiries, please contact:

+44 (0)114 263 4266

info@davidvillagelighting.co.uk

www.davidvillagelighting.co.uk