

NEW WORKS.

New Works Material Pendant

LA5941

SOURCE: <https://www.davidvillagelighting.co.uk/product/New-Works-Material-Pendant/19961>



PRODUCT DESCRIPTION

Designer: Nørgaard & Kechayas

New Works Material Pendant Light

One design with a choice of 13 materials, the New Works Material pendant light is a versatile addition to any room. The Material pendant is like an adaptable chameleon, able to be a standout piece or melt into its surroundings. The original member of the [Material collection](#), this pendant offers a simple design with endless possibilities, with a white inner shade (in all except the Opal Glass and Black Sheep marble versions) to reflect as much light as possible.

With white fittings: natural cork, natural oak, light grey concrete, white marble with inner shade and terracotta.

With black fittings: opal glass, stainless steel, mixed cork, smoked oak, dark grey concrete, black marble, yellow steel and white marble without inner shade.

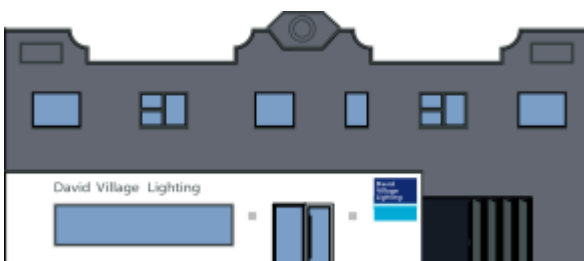
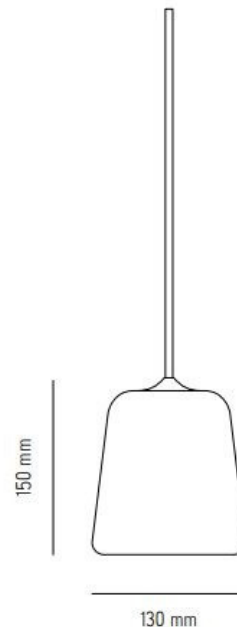
PRODUCT SPECIFICATION

Light Source: 1 x Max 15W E14 (excluded)

IP Code: 20

Dimming: Dimmable via mains phase dimming.

Dimensions: Ø13cm
Height: 14cm



For all sales and technical enquiries, please contact:

+44 (0)114 263 4266

info@davidvillagelighting.co.uk

www.davidvillagelighting.co.uk