

Artemide

Artemide Calipso LED Ceiling / Wall App Compatible

LA5626/APP

SOURCE: <https://www.davidvillagelighting.co.uk/product/Artemide-Calipso-LED-Ceiling-Wall-App-Compatible/19931>



PRODUCT DESCRIPTION

Designer: Neil Poulton

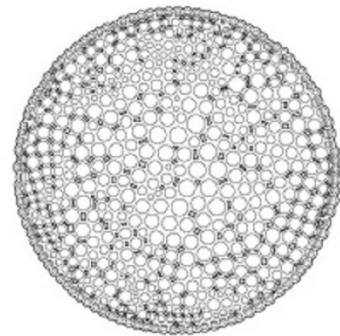
Calipso LED Ceiling / Wall App Compatible by Artemide

The Calipso was designed by using a moon photograph and a complex algorithm, generating this characteristic honeycomb surface. Thin in design, with a large surface the Calipso emits a soft and evenly distributed light emission. Calipso represents the irregularities in nature's geometry and is comprised of various, thin tube sections forming a perfect circle. An amalgamation of optical and decorative intelligence. The Calipso App compatible is perfect to use in either professional or private environments. The app, developed by Artemide, allows you to control the light intensity via your phone or tablet, and allows you to create your own scenes and scenarios. The Calipso App Compatible is available in a choice of two colour temperatures, 2700K or 3000K.

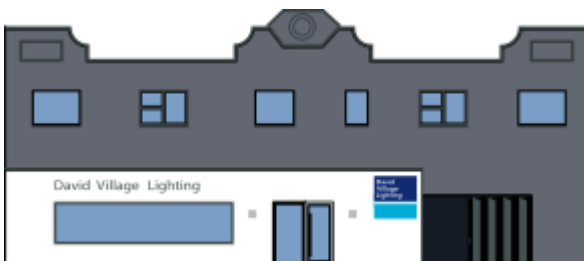
PRODUCT SPECIFICATION

- Light Source:** 55W, 2700K, 2884 lumens
or
55W, 3000K, 2884 lumens
- IP Code:** 20
- Dimming:** Dimmable via Artemide app. Dimmable via Push to make/ switch dimming, dimmable using push to make switches. Please consult your electrician, additional wiring may be required on site.
- Dimensions:** 7.6 cm width
Ø 52.6 cm

526



76



For all sales and technical enquiries, please contact:

+44 (0)114 263 4266

info@davidvillagelighting.co.uk

www.davidvillagelighting.co.uk